

LULC Change Studies

by Gbenga Afuye

Submission date: 06-May-2024 09:08PM (UTC+0200)

Submission ID: 2124362655

File name: Revised_Global_trend_assessment_of_land_use_and_land_cover_changes.docx (3.32M)

Word count: 7802

Character count: 45294

Abstract

The diverse landscape of global ¹ land use and land cover (LULC) change studies were evaluated to uncover the current advancements in data and future research potential through bibliometrics and the Preferred Reporting Items for Systematic Reviews and Meta-Analyses (PRISMA) ¹³ approach. A total of 2710 published articles with the search phrase “Land use and Land cover change” OR “Land-use and Land cover change” OR “Land use/Land cover change” OR “Land use and Land cover changes” were retrieved using Scopus, ²⁶ Web of Science (WOS) and ScienceDirect databases from 1993 to 2022. The findings indicated a 24.37% annual growth rate in LULC change studies, reflecting a rapid overall increase in published articles. China and the USA emerged as the most influential countries regarding article numbers, total citations, and single-country publications. Ethiopia, Ghana, and South Africa, among the top 20 global rankings of the most influential countries in LULC change studies, underscore the global importance of this research. However, the disparity in research output between multiple-country publications and the dominant trend of single-country publications highlights a geographical bias in LULC change studies, particularly in the Global South. This finding underscores the need for a more balanced research approach and can stimulate further investigation. The results also revealed that remote sensing, a rapidly growing field utilising advanced computing techniques, is the most prevalent keyword and has significant applications in reducing land degradation. These findings can significantly enhance research, climate policy programs, land management, and forest ecology planning, which are crucial ⁴⁹ in the face of the growing demand for agriculture and ⁴⁸ habitable land.

Keywords: bibliometrics; land use; land cover changes; PRISMA; remote sensing

Introduction

Estimating the anticipated loss due to vegetation ecology and forest biodiversity is pivotal in determining global land use and cover dynamics (Afuye et al., 2021a; Duan et al., 2023). Incorporating land use and land cover (LULC) change into urban development strategies and resource planning is essential for ensuring sustainable human settlement areas. LULC plays a multifaceted role in water conservation, erosion control, and the accretion process, and it regulates the availability of sediments to coastal landforms (da Cunha et al., 2022; Nath et al., 2023). The threats posed by LULC changes to global biodiversity loss, increase in soil erosion, and distress in hydrological cycles (Nguyen et al., 2023) demand immediate attention. The environmental change dynamics of global climate change are a growing concern for policymaking and development planning at the local and sub-national levels (Lee et al., 2022). Changes in LULC modify the biogeochemical and earth's energy balance cycles, leading to changing climate, ecosystem services, and land surface properties. Globally, 62% of land areas have transformed significantly from naturally vegetated areas to the growing proportion of land use changes to croplands and urban and built-up areas (Afuye et al., 2022; Mpanyaro et al., 2024). The frequency and intensity of disturbances can vary, impacting various environmental components and causing changes in LULC, affecting deforestation, food security, and ecosystem service functions (Ambarwulan et al., 2023).

Several studies revealed the influential factors affecting LULC changes including logging and fires, demographic pressure, infrastructural development, poor drainage, and rapid urbanisation (Selwood et al., 2015; da Cunha et al., 2022; Shehu et al., 2023). Other factors include forest transformations to other lands, alteration of wetlands, soil degradation in croplands, and changes in the productivity of pastoral lands (Sahide & Giessen, 2015; Bhattacharya et al., 2020; Fenetahun et al., 2020). Disaster-prone regions require pre- and post-disaster scenarios to map forest degradation and susceptible areas, buffering high-risk zones, and plan LULC (Aboelnour & Engel, 2018). This is crucial for risk forecasting and determining the loss amount for each LULC type, like forest cover. Satellite imagery, topographic maps, and local terrain characteristics are used to evaluate and assess the accuracy of LULC change detection in disaster management activities (Rashidiyan & Rahimzadegan, 2024). The United Nations (UN) and Food and Agriculture Organization (FAO) report that global land use change, primarily affecting arable land for agriculture, accounts for 37.6% of the Earth's surface area and is one of the largest human environmental impacts (FAO, 2016). The observed changes are attributed to human activities such as agriculture, urban land use, and arboriculture, which affect conservation and ecosystem services (Kanianska, 2016). The international intervention frameworks including the Intergovernmental

Panel on Climate Change (IPCC), Paris Agreement and Sustainable Development Goals (SDGs), are robust international frameworks that effectively incorporate measures into policies and planning (United Nations, 2017; IPCC, 2022b). These frameworks ensure sustainable land use, promoting climate change and sustainable development. The mitigation potential of land use and land cover changes, particularly in forests and agriculture, is crucial for achieving climate targets in the Paris Agreement forum, emphasising land use. Evaluating trends on LULC change and direction for future research and development planning is critical in supporting these debates. Evaluating trends in LULC change and the direction for future research and development planning is crucial for supporting these debates.

Trend mapping and data advances in LULC change studies depend heavily on the fundamentals of global scientific research history shown by bibliometrics. Bibliometrics was used to evaluate research developments and scientific publication collaboration networks broadly applied in different niche areas (Xie et al., 2020; Nduku et al., 2021). The study comprehensively evaluated LULC changes to identify evolutionary trends and potential areas for future research development and planning. Understanding the dynamic trend of land transition and advances in data in LULC is crucial given the prominence of natural and human disturbances. As such, it becomes imperative to conduct a systematic mapping that provides the evolutionary trends of dominant themes fundamental to contributing to the intellectual domain of land use/ land cover niche areas. Hence, this review study evaluated published documents on LULC change, highlighting their contribution to data advancements and potential for future research development using bibliometrics and the PRISMA approach. These results serve as an important baseline on the knowledge akin to ecological restoration strategies on LULC change and ultimately inform decision-making.

2. Data Identification and Methodology

2.1. Bibliometric Data Processing and PRISMA Approach

Scopus, ScienceDirect, and WOS databases were utilised to generate bibliometric data from 1993 to 2022. Similar studies have widely used multiple databases for systematic review and bibliometric analysis (Afuye et al., 2021b; Macarringue et al., 2022). This study adopted the PRISMA technique to comprehensively review LULC change studies (Velasstegui-Montoya et al., 2022). The search key terms “Land use and Land cover change” OR “Land-use and Land cover change” OR “Land use/Land cover change” OR “Land use and Land cover changes” were used to retrieve all open access and English-written published documents within a niche area. Data screening, cleaning, and processing were applied to remove duplicates and irrelevant documents,

reducing the vocabulary dimension (Nduku et al., 2021). The data screening involves skimming and scanning documents using search key terms, including article titles, abstracts, and keywords. It removes irrelevant documents and ensures that the final count of published papers in an Excel spreadsheet matches the search terms. This process helps clean and process irrelevant documents and ensure the final count's accuracy. The PRISMA tool, Zotero (v6.0.7), RStudio (v4.2.3) and Biblioshiny software were used to filter non-informative words and collate all retrieved published documents (Aria et al., 2022). Open-source environment tools like PRISMA, Zotero, and RStudio provide an easy-to-use comprehensive platform for bibliometric data (Aria et al., 2022). PRISMA offers an overview guide to selecting documents from databases to the point of compilation for analysis. R Studio open-source packages, biblioshiny, and RStudio software facilitate script creation, merging multiple datasets, and removing duplicates. Zotero allows for validation before analysis and visualisation of the entire document collection of bibliometric data.

The study analysed 2710 published articles using bibliometric tools and a web interface to evaluate annual scientific production growth trends, global scientific contributions per article, and citation density. The PRISMA stages were chronological, starting with finding published articles using search keywords. Data screening was performed to identify eligible articles, followed by data processing to merge retrieved articles from Scopus, ScienceDirect, and WOS databases. Data cleansing was performed to remove duplicates and prepare documents for analysis. The density visualisation map of the top author's keyword terms was created using VOSviewer (v1.6.20) and the Research Information Systems (RIS) file format for bibliometric data. The minimum number of keyword occurrences was randomly selected at 50 to achieve high-frequency keywords in LULC change studies. The study measured the average growth rate (AGR), the actual difference between previous and current years, and the number of publications in annual scientific production growth (Ruiz-Rosero et al., 2019) using equations (1) and (2). The citation analysis was retrieved through a built-in formula on the R package repository with the following equation (3). A density visualisation map for top authors' keywords was generated on VOSviewer software.

$$AGR = \frac{\sum_{i=Y_s}^{Y_e} P_i - P_{i-1}}{(Y_e - Y_s) + 1} \quad (1)$$

$$Y_s = Y_e - (WindowWidth + 1) \quad (2)$$

where, Y_e = end year; Y_s = start year; P_i = number of publications on year, and the Y_s is calculated from Y_e as shown in equation 2. The default *WindowWidth* is 29 years, which is the study period, and it is determined by the first publication retrieved until the recent year limited for search key

terms. This connotes that, the start year was 1993, and the end year was 2022, which resulted in the calculated AGR for the current study between 1993 and 2022.

$$B_{coup} = A' \times A \quad (3)$$

Formula description: A is a document \times cited reference matrix (A') and B_{coup} is a non-negative and symmetrical matrix. The PRISMA approach below was used for document selection criteria as shown in Figure 1.

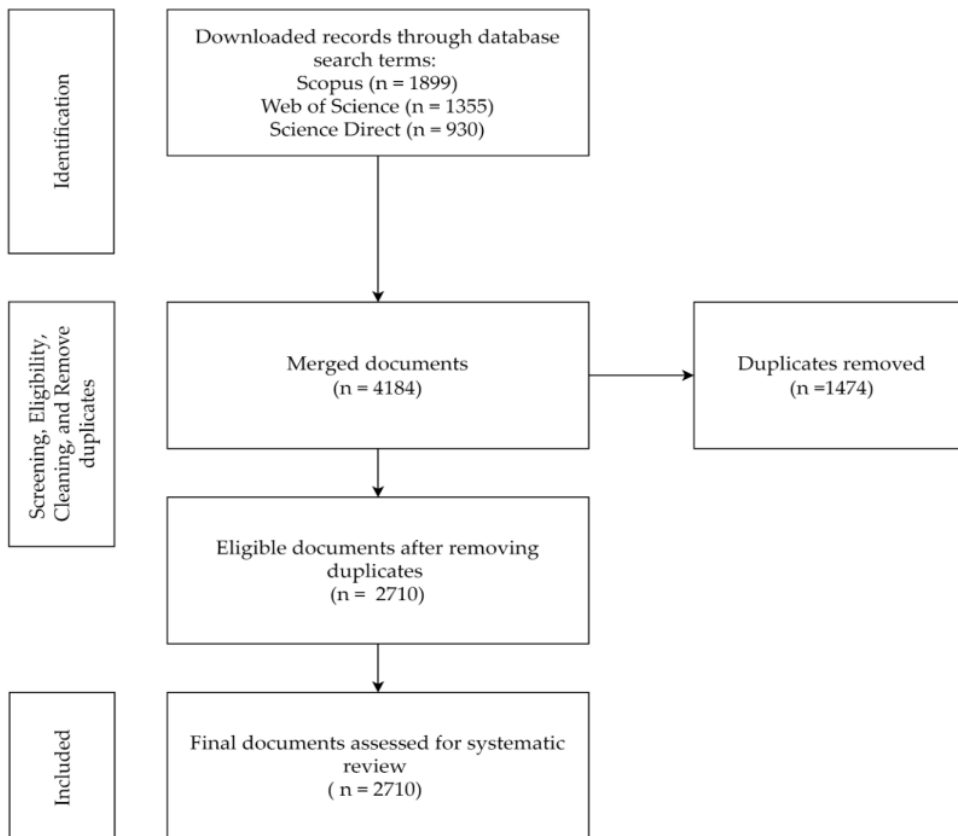


Figure 1. The PRISMA flowchart for document selection criteria

3. Results

3.1. Scopus, ScienceDirect and WOS Extracted Bibliometric Information

The study analysed 2710 LULC studies from Scopus, ScienceDirect, and WOS databases during the survey period, as shown in Table 1. The bibliometric analysis revealed 1736 articles, 148 proceeding papers, 70 reviews, 16 book chapters, 740 other document types, and 834 sources of journals and books. During the study period, 9999 authors and 4.9 co-authors contributed to

strengthening scientific research publication developments on LULC changes. International co-authorships and single-authored documents contributed 1.73% and 101 authors to published documents in LULC change studies. Between 1993 and 2022, global research on LULC experienced an average annual growth rate of 43.51%, indicating increased attention to monitoring change detection in recent decades.

Table 1. Descriptive bibliometric information on LULC change studies

Description	Results
Scopus, ScienceDirect, WOS	3
Timespan	1993-2022
Documents	2710
Journals and Books (Sources)	598
Keywords Plus (ID)	8147
Author's Keywords (DE)	4528
Average citations per document	43.51
Authors	9999
Single-authored documents	101
Co-Authors per Documents	4.99
International co-authorships (%)	1.73
Document Type	
Article	1736
Proceedings Paper	148
Review	70
Book Chapter	16
Others (data paper, early access)	740

3.2. Annual Scientific Trend Dynamics ³⁹ on Land Use and Land Cover Change Studies

Figure 2 shows an annual scientific trend on LULC change studies, with an annual scientific production growth rate of 24.37%. This indicates consistent global advancement in research outputs, as recorded in published documents. Between 1993 and 2009, there was a low progression in published research output. However, an exponential trend began in 2010, peaking in 2022, indicating more detailed advances in LULC change research. The study reveals significant exponential growth in LULC change studies from 2019 to 2022, aligning with Price law in bibliometric analysis (Price, 1976). This growth is attributed to the high demand for agricultural

and habitable land use between 2021 and 2022, with 2022 recording the highest number of publications in this field. The United Nations Environment Programme (UNEP) is working towards sustainable management and restoration of Sustainable Development Goals (SDG15): Life on Land, aiming to ensure the benefits of land-based ecosystems, including sustainable livelihoods for generations (UNEP, 2020). SDG 15 aims to prevent desertification, enhance sustainable practices, reverse biodiversity loss, and manage forest resources effectively to prevent land degradation and biodiversity loss (UNEP, 2020). The research on LULC change studies has gained global attention, contributing to a temporal trend in scholarly output since 2000 ($y = 13.078e^{26.164x}$), as shown in Figure 2.

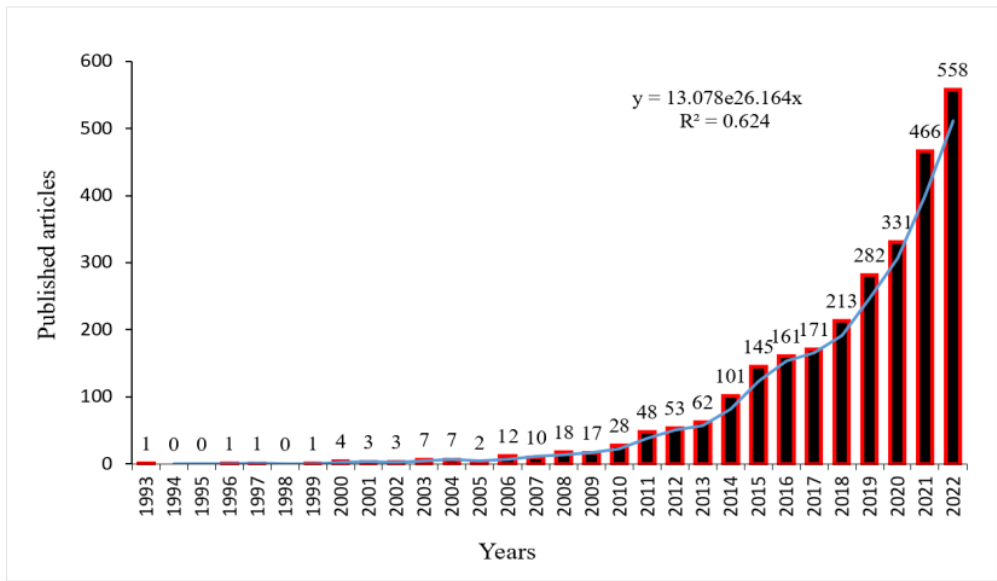


Figure 2. Annual scientific production growth trend from 1993 to 2022

3.3. Global Scientific Contributions per Article and Citation

The research on LULC changes was strengthened by article publications and citations from single and multiple countries as shown in Table 2. China was the most influential country (N = 433), followed by the USA (N = 273) and India (N = 120). The total number of publications, total citations, average article citations, single-country publications (SCP), and multiple-country publications (MCP) varied across countries. The USA (TC = 12153 AAC = 44.50) accounted for the most total citations during the survey period, followed by China (TC = 8628; AAC = 19.90) and Germany (TC = 8628; AAC = 19.90). These countries significantly contributed to SCP and MCP articles in single and joint-authored articles. The results indicate that developed countries,

such as Brazil, Indonesia, and Ethiopia, made significant contributions to publications and citations compared to developing nations. The study revealed significant disparities in multiple-country publications in developing nations, primarily due to language barriers, research grants, and autonomous research (Huang et al., 2016). The research field of LULC change is driven by factors such as intra-country contribution and low inter-country international co-authorships, which have a significant effect. The significant effect of the intra-country contribution and low inter-country international co-authorships of 1.73% were driving factors of LULC change research field. During the survey period, the study revealed that the lack of research grants significantly impacted the collaboration and productivity of researchers across different countries.

Table 2. Top 20 most influential countries per article and citation on land use and land cover change studies

Ranking	Country	N	TSP (%)	TC	AAC	SCP	MCP
1	China	433	15.98	8628	19.90	425	8
2	USA	273	10.07	12153	44.50	269	4
3	India	120	4.43	2517	21	120	0
4	Germany	97	3.58	3442	35.50	90	7
5	Ethiopia	76	2.80	1301	17.10	76	0
6	Brazil	56	2.07	911	16.30	51	5
7	Indonesia	43	1.59	210	4.90	42	1
8	United Kingdom	34	1.25	619	18.20	32	2
9	Canada	30	1.11	747	24.90	28	2
10	France	30	1.11	1103	36.80	29	1
11	Japan	27	0.99	618	22.90	25	2
12	Spain	26	0.96	757	29.10	26	0
13	Malaysia	24	0.89	439	18.30	24	0
14	Italy	23	0.85	549	23.90	23	0
15	Turkey	23	0.85	326	14.20	23	0
16	Ghana	22	0.81	233	10.60	22	0
17	South Africa	21	0.78	310	14.80	19	2
18	Switzerland	21	0.78	593	28.20	19	2
19	Netherlands	20	0.74	1045	52.20	19	1
20	Australia	19	0.70	754	39.70	19	0

Total number of publications (N), Total scientific production (TSP), Total citations (TC), Average article citations (ACC), Single-country publication (SCP), and Multiple-country publication (MCP)

3.4. Institutional Affiliation Contributions

Figure 3 shows the top 20 contributions per document publications of affiliated institutions in LULC studies. The University of Chinese Academy of Sciences was the most predominant institution, followed by the Institute of Geographic Sciences and Natural Resources Research and

Beijing Normal University (n = 73 articles, 2.69%), (n = 55, 2.03%) and (n = 49, 1.81%) published studies respectively. Chinese-affiliated institutions hold the top ranking in publications in scientific studies related to LULC, demonstrating their significant position in the field. Addis Ababa University in Ethiopia ranks fourth among the developing nation's top 20 affiliations per document, with (n = 23, 1.55%) publications. Unlike other developed nations, Ethiopia's exceptional research output suggests that autonomous research funding strengthened its capacity (Fedderke & Goldschmidt, 2015). The study indicates that advancements in research on LULC may have increased the productivity of this field over the study period

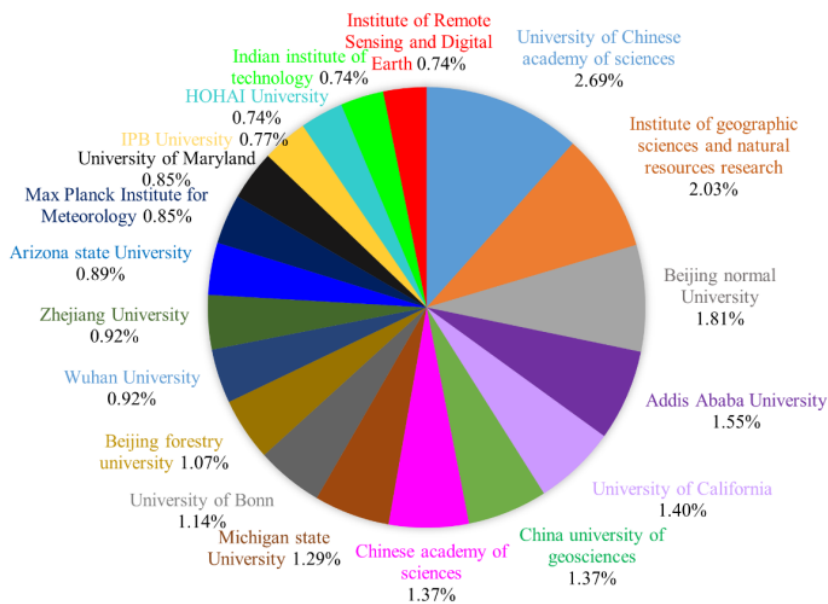


Figure 3. Top 20 institutional affiliations per document publications on LULC change studies

3.5. Land Use and Land Cover Change Authors Keywords

Table 3 shows the top-ranking author's keywords (DE) and keywords plus (ID) in the LULC change research field, with 4499 and 8051 calculated based on occurrences and percentages. The list of the top 20 selected author keywords and keywords included approximately 12 common author keywords. "Remote sensing," "GIS," "Landsat," "urbanisation," "deforestation," and "agriculture" are critical factors in understanding land use and land cover change, which influences "climate change." It is worth noting that "remote sensing," "climate change," and "land use" were found among the top five authors' keywords as well as in the keywords plus section. The results show that "remote sensing" (n = 235) ranked highest with most authors' keywords (DE), while "land use" (n = 935) ranked first with most authors' keywords plus (ID). Research on LULC

change frequently recognises climate change challenges and emphasises the impact of these factors and LULC change responses on the process. The study highlights the impact of both natural and human-made factors on land cover, which can lead to irreversible loss and environmental changes. The interaction between land use patterns and climate change influences the structure of forests, grasslands, and ecosystems (Mndela et al., 2023). The keywords analysis revealed climate change as the third most frequently used term in authors' keywords (2.9%) and the fifth most frequently used term (5.8%) in keywords plus. The study reveals that remote sensing is the primary term for analysing climate change and land use impacts on LULC change studies. Other factors of the author's keywords (DE) include deforestation, urbanisation, land surface temperatures, and agriculture with low frequency, suggesting more research development in LULC change studies. The study revealed that the keywords plus (ID) were more frequently used than the authors' (DE) in the survey.

Table 3. Most relevant author's keywords used on land use and land cover change studies

Rank	Author's keywords (DE)	Frequency (%)	Rank	Keyword-Plus (ID)	Frequency (%)
1	Remote sensing	235 (5.2)	1	Land use	935 (11.6)
2	Land use and land cover change	146 (3.3)	2	Land cover	758 (9.4)
3	Climate change	132 (2.9)	3	Land use change	682 (8.5)
4	GIS	112 (2.5)	4	Remote sensing	481 (5.9)
4	Land use	112 (2.5)	5	Climate change	474 (5.8)
5	Land use/land cover change	91 (2.0)	6	Land use and land cover change	286 (3.5)
6	Landsat	89 (1.9)	7	China	264 (3.2)
7	Land use change	79 (1.8)	8	Deforestation	215 (2.7)
8	Change detection	73 (1.6)	9	Urbanization	196 (2.4)
9	Urbanization	72 (1.6)	10	Satellite imagery	186 (2.3)
10	Deforestation	71 (1.5)	11	Agriculture	183 (2.2)
11	Land cover	69 (1.5)	12	Landsat	176 (2.1)
12	LULC	51 (1.1)	13	Forestry	166 (2.0)
13	Ecosystems services	50 (1.1)	14	Spatiotemporal analysis	148 (1.8)
14	Land surface temperatures	45 (1.0)	15	Land use/land cover change	140 (1.7)
15	NDVI	44 (0.9)	16	GIS	136 (1.6)
16	Land cover change	40 (0.8)	17	Vegetation	134 (1.6)
17	Agriculture	34 (0.7)	18	Agricultural land	129 (1.6)
18	China	29 (0.6)	19	runoff	119 (1.4)
19	Urban growth	27 (0.6)	20	Biodiversity	117 (1.4)

3.6. Density Visualization Map of Highest-ranking Author's Keywords in LULC Change Dynamics

Figure 4 shows the density visualisation map of the top 20 authors' keywords frequently used in LULC change studies, highlighting their scientific contributions to research outputs. Zipf's law was used to rank frequent authors' keywords based on research subjects, directions, and niche trends, utilising the principle of the least effort to determine the highest occurrence of the lowest-frequency word (Madrid-Casaca et al., 2021). The predominant author's keywords displayed higher density (light yellow colour), while less frequently used authors' keywords showed lower density (dark purple colour). Moreover, the author's keywords such as "remote sensing," "land use and land cover change," "climate change," "urbanisation," "Modis," and "NDVI" significantly influence the field. Other significant variables like soil erosion, urban sprawl, population, evapotranspiration, cropland, forest transition, runoff, afforestation, and land management had a lower density of keywords. Satellite remote sensing applications are crucial in estimating and detecting [land use/land cover changes using multitemporal Modis NDVI data in](#) response to climate change and urban sprawl.

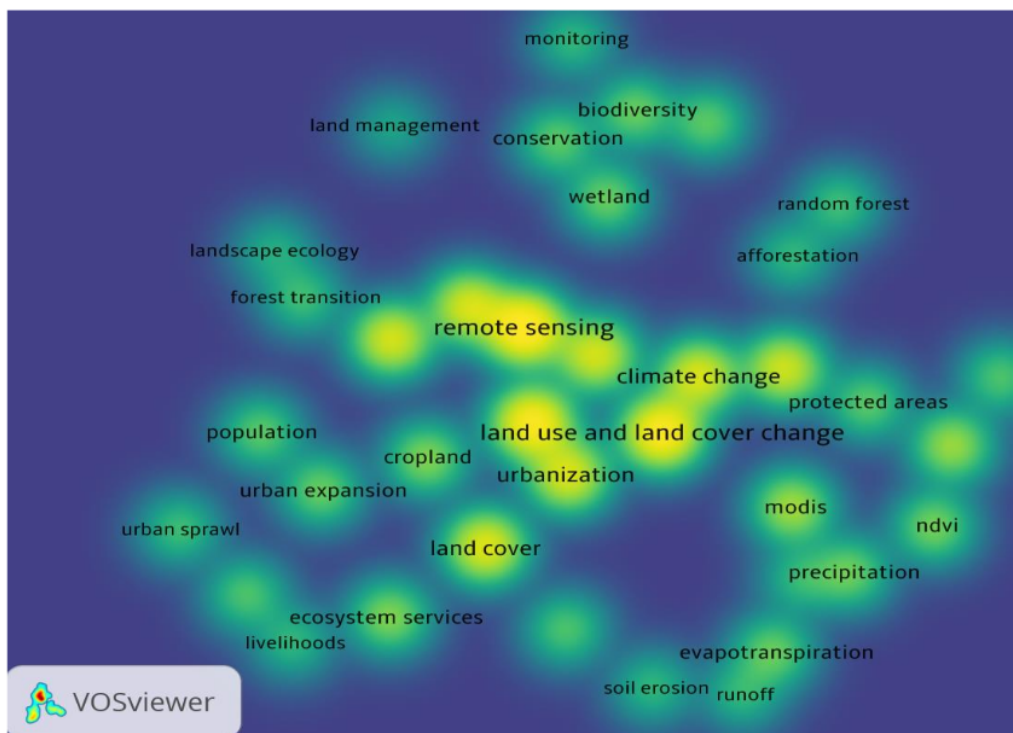


Figure 4. Density visualization map of top author's keywords co-occurrence

3.7. [Top Global Cited Published Documents on LULC Change Research Development](#)

Table 4 presents the most cited international studies on LULC changes, outlining data sources, techniques, and findings for each case study within the research development scope. Most top-cited studies utilise Landsat thematic mapper (TM), consisting of Landsat 4 and 5, with seven spectral bands ranging from 30 to 120 m resolution (Hong et al., 2011; Nurwanda et al., 2016). Studies indicate that maximum likelihood supervised classification outperforms unsupervised classification in accurately predicting LULC change (Kaur et al., 2013; Alloghani et al., 2020). The findings show that supervised classification techniques like maximum likelihood are commonly used to monitor and map land use and cover changes. Climate change, land surface temperature, urbanisation, human-induced degradation, and socioeconomic developments contribute to the long-term dynamics of land use and land cover (Salleh et al., 2013; Purwanto et al., 2016). Intervention strategies, such as expanding urban green spaces and creating buffer zones around protected areas, aim to mitigate the severe impacts of land use and land cover changes (Buyadi et al., 2013). Policy decision-making and interventions supporting advanced remote sensing technologies are limited to LULC change research in the Global South (Qingqing et al., 2012; Dlamini et al., 2021). Recent environmental policy interventions are expected to advance, with cited articles in remotely sensed data in LULC changing research trends for future development and mitigation of land degradation (Table 4).

Table 4. Top 20 most globally cited documents on ⁵⁰ land use and land cover change studies from 1993 to 2022

S/N	Data Sources	Methods	Findings/ Research gaps	Year of Total Citation	References
1.	⁴ Landsat 7 ETM+, Landsat 8 OLI/TIRS	Supervised classification	Findings show ¹⁶ that increasing temperatures are the driving factor of LULC changes in the Malang city study area.	2015	Purwanto et al., 2016 ³
2.	Land use map products of Surabaya-Sidoarjo areas	Interviews and images	The results show that the identification of a co-existing dividing line (CDL) is necessary to control the rapid urban project-based housing and homeowner-based housing development for urban land use zoning.	2015	Tutuko & Shen, 2016
3.	Landsat TM, Landsat 7 ETM+	Supervised classification method	The findings showed that the multi-temporal Landsat satellite imagery and digital change detection provide a long temporal scale and feasible tools to understand landscape planning characteristics and patterns of land cover changes.	2015	Nurwanda et al., 2016
4.	Landsat TM images	Classified normalized difference vegetation index (NDVI) using the	Findings revealed long period NDVI maps showed capabilities to indicate land cover changes over time, highlighting the necessity for protection and revegetation of the degraded vegetated areas during urban and economic development.	2015	Aburas et al., 2015

- natural breaks (Jenks) method
- 22
5. Landsat TM data LST Findings show that urbanisation (Land use/land cover, 2013 Salleh et al., 2013
- extraction, LST) and Sea level are contributing factors to the rise and formation of urban heat Islands.
- Normalized Difference Built-up Index (NDBI), NDVI maps
6. Landsat 5 TM LST and NDVI The findings reveal that the growth of green spaces in urban areas helps to mitigate the effects of urban heat islands and improve the quality of life for urban residents. Buyadi et al., 2013
7. ResourceSat-1 (IRS-P6) and Indian Remote Sensing data (IRS-1D) Supervised classification The results show that the integration of spatial patterns for major soil and climate parameters into homogeneous agroecological plans improves the sustainability of agricultural land use/cover to ensure yields. Kaur et al., 2013
8. Landsat TM optical images Maximum likelihood algorithm Findings revealed that the generation of buffer zones using satellite imagery provides a powerful tool for mapping land use activities in protected areas (PAs), which aids in interventions for better management and prevention of the PAs from neighbouring harmful activities. Ahmad et al., 2012

9. Landsat MSS, Landsat TM images
Supervised classification and interviews
The findings quantified the interaction of natural environmental changes; social and economic factors contribute to the changes in land use and land cover. Additionally, it is necessary to consider both factors in sustainable development interventions.
2011
Qingqing et al., 2012
10. Landsat TM and ETM+
Supervised classification and interviews
The results show that human-induced land degradation and urbanization are driving factors for land transformations that affect LULC changes.
2011
Alfiky et al., 2012
11. Landsat 5 TM
LST, object-based classification
The findings validate Landsat satellite image prospects on the surface heat environment and land use change quantification with LST, which correlate positively with impervious surfaces and negatively with vegetated areas.
2011
Lv et al., 2011
12. Argentina National Meteorological Service, National Institute of Agricultural Technology in Argentina for the soil productivity, digital elevation model (DEM), and Shuttle Radar Topography Mission (SRTM)
Dynamic land cover simulation model (Dyna-CLUE)
Findings revealed that the Dyna-CLUE spatial simulation model demonstrated satisfactory results of land cover dynamics in different crops, and it can be used to predict anticipated trajectories of land cover changes using current trends to help with sustainable land use planning.
2011
Lourdes et al., 2011

Supervised classification

Landsat TM and ASTER images

13.

The findings show that simultaneously disturbances of both natural and human factors contribute to the witnessed temporal changes in land use characteristics.

Markov model estimation

14. Landsat-5 TM

The findings reveal the feasibility of the Markov model in estimating anticipated increases and decreases in LULC dynamics.

Maximum Likelihood supervised classification

2 Advanced Visible and Near Infrared Radiometer type 2 (AVNIR-2), Landsat TM, Field survey, Land use map from FMS DENR – CAR, Philippines

15.

The findings revealed that integrating multiple remote sensing satellite images from this study showed their applicability and effectiveness for monitoring spatiotemporal patterns of LULC changes using the geographic information systems platform.

Maximum likelihood classification

16. Landsat TM and ETM+

The results show that acquired atmospheric images contribute to the classification errors and relatively low accuracy for land use change, which can be improved through using post-classification detection. Post-classification is a heavy workload that requires high classification accuracy.

Maximum likelihood classification

61 NLCD 2001 Land Cover product, Landsat 5 TM images

17.

Findings demonstrate that classifying images into area-class maps using different reference data shows the existence of large impacts of semantic bias. Other studies should focus on the effect of bias in the reference

- data to reduce uncertainty and produce more accurate, and quality classification assessments
- 29
M'Ikiugu et al., 2012
18. Structured interviews, Orthographic photographs, and vector maps
Landscape metrics
The study shows the feasibility of the landscape metrics method for identifying potential urban green space expansion areas using a suitability checklist and proximity buffering with the help of GIS. This information is useful in site analysis during planning for new development infrastructure
2011
19. Quickbird data
Supervised classification
Findings demonstrate the ability of high-resolution remote sensing satellite images from Quickbird to be suitable for spatial-temporal monitoring of LULC change. More so, key factors of LULC changes include population growth and economic development.
28
Erener et al., 2012
20. Scanned land-use maps of Yongshou with 1:50000 resolutions
Landscape diversity index, Landscape dominance index, Landscape evenness index
The results show that the transfer matrix of the landscape diversity index, landscape dominance index, and landscape evenness index depict temporal and spatial analyses of land use dynamics, which explain the increasing and decreasing trends witnessed on different land covers over time.
2011
Lubo et al., 2011

4. Discussion

⁵ The study evaluated global research history and current data advancements to identify potential future research developments and planning in the LULC change field. The reviewed publications were indexed from databases such as ScienceDirect, the WOS, and Scopus from 1993 to 2022. The study utilises bibliometrics and the PRISMA method to analyse the LULC change research field, examining trends, institutional contributions, author keywords, and top global cited articles. The review of studies on land use and land cover changes revealed an annual growth rate of 24.37% per article, indicating a significant trend in global research. This may be attributed to increasing population demands and climate change affecting land use developments (Wu et al., 2021). The study on land use and land cover change studies revealed an unstable field with inconsistent growth per article. China and the USA were the most influential countries, with more published articles, citations, and collaborative publications. The study suggests limited research in developing countries, especially in the Global South, and advocates for increased funding and independent research to enhance land use/land cover change studies (Fedderke & Goldschmidt, 2015). China, a developing country, has experienced significant land use changes due to rapid urbanisation (Ning et al., 2018), ranking first in publication output. Top Chinese institutions contributed substantially to scientific publications in land use and land cover (LULC) studies. Meanwhile, the USA ranked second in publication output, utilising advanced technological innovations to assess complex land use planning through decision-support systems (Lv et al., 2021). For example, the USA Smart City is a prime example of advanced technology demonstrating significant progress in research and development in land use/land cover change. Consequently, the dominant trend of influential nations per article and citations in single-country publications (SCP) negatively impacts research productivity and scientific openness. The study revealed low international co-authorships in countries like Spain, India, Indonesia, Malaysia, Ethiopia, Ghana, and South Africa, along with lower research output on LULC change studies. Ethiopia ranks among the top 20 African countries in LULC change studies, with numerous publications and citations per country status. Addis Ababa University in Ethiopia ranked fourth among institutions, with 23 publications accounting for 1.55% of the country's total. This issue is attributed to the lack of geographical research coverage in African countries. To boost research in the LULC change field, collaboration between single-country publications in China, the USA, Germany, and Brazil and multiple-country publications (MCP), including authors from diverse ethnic groups, is crucial.

The study identified vital themes influencing changes in LULC, such as climate change, urbanisation, cropland, soil erosion, urban expansion, runoff, evapotranspiration, and afforestation. Future research directions include incorporating remote sensing applications into socio-environmentally oriented research and planning programs for land management, biodiversity conservation, and forest ecology. The sparsely quantified keyword terms identified in this study present a unique opportunity to assess the environmental impacts of land use changes, which are essential for informing future planning and management interventions. The top 20 globally cited documents reveal limitations in the application of recent high-resolution satellite sensors, including the European Space Agency (ESA) Sentinel missions. The results from the top 20 globally cited documents revealed the limitations in the application of recent high-resolution satellite sensors such as European Space Agency (ESA) Sentinel missions, among others. Moreover, the advancements in Sentinel data have demonstrated its potential to enhance the mapping of LULC changes (Nasiri et al., 2022). Sentinel, launched in 2014, initially lacked long-term historical records compared to the Landsat series, which offers better coverage and a longer lifespan (Nasiri et al., 2022). Hence, the empirical evidence supporting the contributions of Earth Observation Satellites like the Sentinel missions has received limited attention (Steinhausen et al., 2018; Nasiri et al., 2022). The reviewed studies were utilised to identify current research hotspots and dominant themes based on time-varying trends in LULC changes observed during the study period. The study evaluated its diverse range, significantly influencing current and future research development, planning, and filling a literature gap.

4.1. Limitation and Future Research Prospects on Land Use and Land Cover Changes

This study's limitations include its focus on 1993-2022, which restricts its applicability to a broader context and other LULC change domains. The three databases used were chosen due to early attention to LULC change studies in 1993, making it challenging to generate a comprehensive dataset. The analysis was condensed to focus on significant research on LULC changes to accommodate the niche area. This suggests that further research using additional databases can help quantify the potential improvements and developments in understanding the relationship between external and internal factors influencing change dynamics. Further analysis is needed to understand the full implications of anthropogenic land use and carbon storage. This will aid in monitoring substantial investments in sustainable land management practices vis national and global statistical infrastructures. The study suggests integrating spatial remote sensing-based models like the future land use simulation (FLUS), Land Change Modeler (LCM), Cellular Automata-Markov chain (CA-MC) model and patch-generating land use simulation (PLUS) to predict future LULC changes. Modelling the effects of land use and

land cover changes will provide a robust assessment of spatiotemporal characteristics, trends, drivers, and future predictions.

5. Conclusion

The study evaluated the scientific research history and current data advancements to identify potential areas for future development and planning in LULC change studies from 1993 to 2022. The study reveals research hotspots and central themes in the evolution of land use and land cover change. The reviewed articles highlight “remote sensing” as the primary research theme in LULC and the most commonly used method for creating physical, theoretical, or computer-based models to study land use/land cover change. The keyword terms indicate that maximum likelihood classification is the primary method to address the environmental impacts of land use/land cover changes in the field. The dynamic trends of the top author’s keywords and associated influences on land use/land cover change may be expressed in four evolutionary paths. These include remotely sensed data monitoring and informed decisions on degraded lands, restoration policy enhancement, and advanced cutting-edge research in developing nations. The study suggests that developing nations can combat environmental degradation by promoting afforestation, conservation, and climate policy programs and reducing their carbon footprint.

The findings of this study serve as a basis for future research development on land use and land cover change planning initiatives. The study recommends incorporating additional academic databases to enhance research in underrepresented global South regions, thereby addressing geographical research bias. Future research should utilise physical-based models, such as artificial intelligence, deep learning, regression, computational, Google Earth Engine, and machine learning algorithms, to monitor and predict global land use and land cover changes. Industrialised nations have significantly contributed to land use change via agricultural intensification, urbanisation, deforestation, and energy systems, leading to extensive scientific research on LULC changes. In contrast, developing countries have implemented measures for soil conservation and planning initiatives, including the adoption of nature-based solutions (NBS). NBS is crucial for reducing and reversing the loss of nature and land use changes, addressing global biodiversity loss, and preserving urban green infrastructure. However, in developing nations, little attention is given to the consequences of climate change-related trends in land use change, population expansion, and the conversion of wetlands into arable land and pasture. These changes affect weather and climate, contributing to biodiversity decline. The findings reveal the global research history and current advances in data on LULC

change dynamics, increasing our knowledge of landscape restoration strategies. ¹ This study contributes to reducing the negative impacts of LULC changes, achieving the planet's SDGs and IPCC goals, and promoting green area expansion.

References

- Aboelnour, M., & Engel, B. A. (2018). Application of remote sensing techniques and Geographic information systems to analyse land surface temperature in response to land use/land cover change in Greater Cairo Region, Egypt. *Journal of Geographic Information System*, 10(1), 57-88.
- Aburas, M. M., Abdullah, S. H., Ramli, M. F., & Ash'aari, Z. H. (2015). Measuring land cover change in Seremban, Malaysia using NDVI index. *Procedia Environmental Sciences*, 30, 238-243.
- Afuye, G. A., Kalumba, A. M and Orimoloye, I. R., (2021a). Characterisation of Vegetation Response to Climate Change: A Review. *Sustainability*, 13(13), 7265.
- Afuye, G. A., Kalumba, A. M., Busayo, E. T., & Orimoloye, I. R. (2021b). A bibliometric Review of vegetation response to climate change. *Environmental Science and Pollution Research*, 29(13), 18578-18590.
- Afuye, G. A., Kalumba, A. M., Ishola, K. A., & Orimoloye, I. R. (2022). Long-Term Dynamics and Response to Climate Change of Different Vegetation Types Using GIMMS NDVI3g Data over Amathole District in South Africa. *Atmosphere*, 13(4), 620.
- Ambarwulan, W., Yulianto, F., Widiatmaka, W., Rahadiati, A., Tarigan, S. D., Firmansyah, I., & Hasibuan, M. A. S. (2023). Modelling land use/land cover projection using different scenarios in the Cisadane Watershed, Indonesia: Implication on deforestation and food security. *The Egyptian Journal of Remote Sensing and Space Science*, 26(2), 273-283.
- Aria, M., Cuccurullo, C., D'Aniello, L., Misuraca, M., & Spano, M. (2022). Thematic Analysis as a New Culturomic Tool: The Social Media Coverage on COVID-19 Pandemic in Italy. *Sustainability*, 14(6), 3643.
- Alloghani, M., Al-Jumeily, D., Mustafina, J., Hussain, A., & Aljaaf, A. J. (2020). A systematic review on supervised and unsupervised machine learning algorithms for data science. *Supervised and unsupervised learning for data science*, 3-21.
- Alfiky, A., Kaule, G., & Salheen, M. (2012). Agricultural fragmentation of the Nile Delta; a modelling approach to measuring agricultural land deterioration in Egyptian Nile Delta. *Procedia Environmental Sciences*, 14, 79-97.
- Ahmad, C. B., Abdullah, J., & Jaafar, J. (2012). Community activities around protected areas and the impacts on the environment at Krau Wildlife Reserve, Malaysia. *Procedia-Social and Behavioral Sciences*, 68, 383-394.
- Buyadi, S. N. A., Mohd, W. M. N. W., & Misni, A. (2013). Green space's growth impact on the urban microclimate. *Procedia-Social and Behavioral Sciences*, 105, 547-557.
- Bhattacharya, R. K., Chatterjee, N. D., & Das, K. (2020). An integrated GIS approach to analyse the impact of land use change and land cover alteration on groundwater potential level: a study in Kangsabati Basin, India. *Groundwater for sustainable development*, 11, 100399.
- da Cunha, E. R., Santos, C. A. G., da Silva, R. M., Panachuki, E., de Oliveira, P. T. S., de Souza Oliveira, N., & dos Santos Falcão, K. (2022). Assessment of current and future land use/cover changes in soil erosion in the Rio da Prata basin (Brazil). *Science of The Total Environment*, 818, 151811.
- Dlamini, M., Adam, E., Chirima, G., & Hamandawana, H. (2021). A remote sensing-based Approach to investigate changes in land use and land cover in the lower uMfolozi floodplain system, South Africa. *Transactions of the Royal Society of South Africa*, 76(1), 13-25.
- Duan, X., Chen, Y., Wang, L., Zheng, G., & Liang, T. (2023). The impact of land use and land

- cover changes in the landscape pattern and ecosystem service value in the Sanjiangyuan region of the Qinghai-Tibet Plateau—*Journal of Environmental Management*, 325, 116539.
- Erener, A., Düzgün, S., & Yalciner, A. C. (2012). Evaluating land use/cover change with temporal satellite data and information systems. *Procedia Technology*, 1, 385-389.
- Estoque, R. C., & Murayama, Y. (2011). Spatio-temporal urban land use/cover change analysis in a hill station: The case of Baguio City, Philippines. *Procedia-Social and Behavioral Sciences*, 21, 326-335.
- FAO, (2016). *Trees, Forests and Land Use in Drylands: The First Global Assessment Preliminary Findings*. Food and Agriculture Organization of the United Nations, Rome, Italy, 31 pp.
- Fenetahun, Y., Yong-Dong, W., You, Y., & Xinwen, X. (2020). Dynamics of forage and land cover changes in Teltele district of Borana rangelands, southern Ethiopia: using geospatial and field survey data. *BMC Ecology*, 20(1), 1-16.
- Hong, Z., Hailin, L., & Zhen, C. (2011). Analysis of land use dynamic change and its impact on the water environment in Yunnan plateau lake area—A case study of the Dianchi Lake drainage area. *Procedia Environmental Sciences*, 10, 2709-2717.
- Huang, J., Tang, J., Qu, Y., Zhang, L., Zhou, Y., Bao, S., & Mu, D. (2016). Mapping the knowledge structure of neonatal hypoxic-ischemic encephalopathy over the past decade: a co-word analysis based on keywords. *Journal of Child Neurology*, 31(6), 797-803.
- IPCC, (2022b). Summary for Policymakers. In: *Climate Change 2022: Mitigation of Climate Change. Contribution of Working Group III to the Sixth Assessment Report of the Intergovernmental Panel on Climate Change* [P.R. Shukla, J. Skea, R. Slade, A. Al Khourdajie, R. van Diemen, D. McCollum, M. Pathak, S. Some, P. Vyas, R. Fradera, M. Belkacemi, A. Hasija, G. Lisboa, S. Luz, J. Malley, (eds.)]. Cambridge University Press, Cambridge, UK and New York, NY, USA.
- Kaur, R., Mazumdar, S. P., Chanda, P., Sharma, S. K., Kamble, K. H., Mendiratta, N., & Chakraborty, D. (2013). Biophysical linkage with simulation modelling for sustainable land use and agricultural productivity: a case study in western Uttar Pradesh, India. *Procedia Environmental Sciences*, 18, 818-828.
- Kanianska, R. (2016). Agriculture and its impact on land use, environment, and ecosystem services. *Landscape ecology-The influences of land use and anthropogenic impacts of landscape creation*, 1-26.
- Lee, S., Paavola, J., & Dessai, S. (2022). Towards a deeper understanding of barriers to national climate change adaptation policy: A systematic review. *Climate Risk Management*, 35, 100414.
- Lourdes, L., Karina, Z., Pedro, L., Héctor, M., & Néstor, M. (2011). A dynamic simulation model of land cover in the Dulce Creek Basin, Argentina. *Procedia Environmental Sciences*, 7, 194-199.
- Lubo, G., Lei, Y., Yi, R., Zhewei, C., & Huaxing, B. (2011). Spatial and temporal change of landscape pattern in the hilly-gully region of the loess plateau. *Procedia Environmental Sciences*, 8, 103-111.
- Lv, T., Wang, L., Xie, H., Zhang, X., & Zhang, Y. (2021). Exploring the Global Research Trends of Land Use Planning Based on a Bibliometric Analysis: Current Status and Future Prospects. *Land*, 10(3), 304.

- Lv, Z. Q., & Zhou, Q. G. (2011). Utility of Landsat image in the study of land cover and land surface temperature change. *Procedia environmental sciences*, 10, 1287-1292.
- Macarringue, L. S., Bolfe, É. L., & Pereira, P. R. M. (2022). Developments in land use and land cover classification techniques in remote sensing: A review. *Journal of Geographic Information System*, 14(1), 1-28.
- Madrid-Casaca, H., Salazar-Sepúlveda, G., Contreras-Barraza, N., Gil-Marín, M., & Vega-Muñoz, A. (2021). Global trends in coffee agronomy research. *Agronomy*, 11(8), 1471.
- Mndela, M., Moss, S., Gusha, B., Thamaga, K. H., Afuye, G. A., Abdo, H. G., & Almohamad, H. (2023). Functional Trait Responses of C4 Bunchgrasses to Fire Return Intervals in the Semi-Arid Savanna of South Africa. *Diversity*, 15(12), 1201.
- Mpanyaro, Z., Kalumba, A. M., Zhou, L., & Afuye, G. A. (2024). Mapping and Assessing Riparian Vegetation Response to Drought along the Buffalo River Catchment in the Eastern Cape Province, South Africa. *Climate*, 12(1), 7.
- M'Ikiugu, M. M., Kinoshita, I., & Tashiro, Y. (2012). Urban green space analysis and identification of its potential expansion areas. *Procedia-Social and Behavioral Sciences*, 35, 449-458.
- Nath, A., Koley, B., Choudhury, T., Saraswati, S., Ray, B. C., Um, J. S., & Sharma, A. (2023). Assessing Coastal Land Use and Land-cover Change Dynamics Using Geospatial Techniques. *Sustainability*, 15(9), 7398.
- Nasiri, V., Deljouei, A., Moradi, F., Sadeghi, S. M. M., & Borz, S. A. (2022). Land use and land cover mapping using Sentinel-2, Landsat-8 Satellite Images, and Google Earth Engine: A comparison of two composition methods. *Remote Sensing*, 14(9), 1977.
- Nurwanda, A., Zain, A. F. M., & Rustiadi, E. (2016). Analysis of land cover changes and landscape fragmentation in Batanghari Regency, Jambi Province. *Procedia-Social and Behavioral Sciences*, 227, 87-94.
- Ning, J., Liu, J., Kuang, W., Xu, X., Zhang, S., Yan, C. & Ning, J. (2018). Spatiotemporal patterns and characteristics of land-use change in China during 2010–2015. *Journal of Geographical Sciences*, 28(5), 547-562.
- Nduku, L., Kalumba, A. M., Munghemezulu, C., Mashaba-Munghemezulu, Z., Chirima, G. J., Afuye, G. A., & Busayo, E. T. (2021). Earth observation systems and pasture modeling: A bibliometric trend analysis. *ISPRS International Journal of Geo-Information*, 10(11), 793.
- Nguyen, T. T., Grote, U., Neubacher, F., Do, M. H., & Paudel, G. P. (2023). Security risks from climate change and environmental degradation: implications for sustainable land use transformation in the Global South. *Current Opinion in Environmental Sustainability*, 63, 101322.
- Qingqing, Z., Hailiang, X., Jingyi, F., Pujia, Y., & Peng, Z. (2012). Spatial analysis of land use and land cover changes in the recent 30 years in the Manas River Basin. *Procedia Environmental Sciences*, 12, 906-916.
- Price, D. D. S. (1976). A general theory of bibliometric and other cumulative advantage processes. *Journal of the American Society for Information Science*, 27(5), 292-306.
- Purwanto, D. H. U., & Kurniawan, B. R. (2016). Spatio-temporal analysis trend of land use and land cover change against temperature based on remote sensing data in Malang city. *Procedia-Social and Behavioral Sciences*, 227, 232-238.
- Rashidiyan, M., & Rahimzadegan, M. (2024). Investigation and Evaluation of Land Use–Land

- Cover Change Effects on Current and Future Flood Susceptibility. *Natural Hazards Review*, 25(1), 04023049.
- Ruiz-Rosero, J., Ramírez-González, G., & Viveros-Delgado, J. (2019). Software survey: ScientoPy, a scientometric tool for topic trend analysis in scientific publications. *Scientometrics*, 121(2), 1165-1188.
- Sahide, M. A. K., & Giessen, L. (2015). The Fragmented Land Use Administration in Indonesia: Analysing bureaucratic responsibilities influencing tropical rainforest transformation systems. *Land Use Policy*, 43, 96-110.
- Salleh, S. A., Latif, Z. A., Mohd, W. M. N. W., & Chan, A. (2013). Factors contributing to the formation of an urban heat island in Putrajaya, Malaysia. *Procedia-Social and Behavioral Sciences*, 105, 840-850.
- Selwood, K. E., McGeoch, M. A., & Mac Nally, R. (2015). The effects of climate change and land-use change on demographic rates and population viability. *Biological Reviews*, 90(3), 837-853.
- Shehu, P., Rikko, L. S., & Azi, M. B. (2023). Monitoring urban growth and changes in land use and land cover: a strategy for sustainable urban development. *Int. J. Hum. Cap. Urban Manag*, 8, 111-126.
- Shen, P., Zhang, J., & Su, Z. (2011). The Application of Remote Sensing in the Extraction of Urban Land Use Changes. *Procedia Environmental Sciences*, 10, 1589-1594.
- Steinhausen, M. J., Wagner, P. D., Narasimhan, B., & Waske, B. (2018). Combining Sentinel-1 and Sentinel-2 data for improved land use and land cover mapping of monsoon regions. *International journal of applied earth observation and geoinformation*, 73, 595-604.
- Tutuko, P., & Shen, Z. (2016). The effect of land use zonings on housing development: the introduction of CDL approach in the border area of Surabaya and Sidoarjo Regency, Indonesia. *Procedia-Social and Behavioral Sciences*, 227, 107-111.
- UNEP, U. (2020). Environment Programme.(2020). Press Release: United in Science report: Climate change has not stopped for COVID-19.
- United Nations (2017). Resolution Adopted by the General Assembly on 6 July 2017, Work of the Statistical Commission Pertaining to the 2030 Agenda for Sustainable Development (A/RES/71/313 Archived 28 November 2020 at the Wayback Machine); General Assembly: New York, NY, USA. Available online: <https://undocs.org/A/RES/71/313> (accessed on 10 July 2017).
- Velastegui-Montoya, A., Montalván-Burbano, N., Peña-Villacreses, G., de Lima, A., & Herrera-Franco, G. (2022). Land Use and Land Cover in Tropical Forest: Global Research. *Forests*, 13(10), 1709.
- Wu, H., Lin, A., Xing, X., Song, D., & Li, Y. (2021). Identifying core driving factors of urban land use change from global land cover products and POI data using the random forest method. *International Journal of Applied Earth Observation and Geoinformation*, 103, 102475.
- Xie, H., Zhang, Y., Wu, Z., & Lv, T. (2020). A bibliometric analysis on land degradation: Current status, development, and future directions. *Land*, 9(1), 28.
- You, J., & Zhang, J. (2011). Uncertainty Comparison for Area-Class Maps Concerning Different Reference Data. *Procedia Environmental Sciences*, 10, 2075-2082.
- Zhang, W. W., Yao, L., Li, H., Sun, D. F., & Zhou, L. D. (2011). Research on land use change

in Beijing Hanshiqiao Wetland Nature Reserve using remote sensing and GIS. *Procedia Environmental Sciences*, 10, 583-588.

LULC Change Studies

ORIGINALITY REPORT

14%

SIMILARITY INDEX

11%

INTERNET SOURCES

12%

PUBLICATIONS

0%

STUDENT PAPERS

PRIMARY SOURCES

1	www.science.gov Internet Source	1%
2	www.mdpi.com Internet Source	1%
3	www.ipcc.ch Internet Source	1%
4	link.springer.com Internet Source	1%
5	vital.seals.ac.za:8080 Internet Source	1%
6	doi.org Internet Source	<1%
7	www.researchgate.net Internet Source	<1%
8	Maher Milad Aburas, Mohd Sanusi S. Ahamad, Najat Qader Omar. "Spatio-temporal simulation and prediction of land-use change using conventional and machine learning	<1%

models: a review", Environmental Monitoring and Assessment, 2019

Publication

9

etd.aau.edu.et

Internet Source

<1 %

10

www.frontiersin.org

Internet Source

<1 %

11

"Impacts of Global Change on the Hydrological Cycle in West and Northwest Africa", Springer Science and Business Media LLC, 2010

Publication

<1 %

12

Shereif H. Mahmoud, A. A. Alazba. "Land cover change dynamics mapping and predictions using EO data and a GIS-cellular automata model: the case of Al-Baha region, Kingdom of Saudi Arabia", Arabian Journal of Geosciences, 2016

Publication

<1 %

13

www.e-iph.co.uk

Internet Source

<1 %

14

Zinhle Mashaba-Munghemezulu, Lwandile Nduku, Cilence Munghemezulu, George Johannes Chirima. "Research Progress in the Application of Google Earth Engine for Grasslands Based on a Bibliometric Analysis", Grasses, 2024

Publication

<1 %

-
- 15 Massimo Aria, Corrado Cuccurullo. "bibliometrix : An R-tool for comprehensive science mapping analysis", Journal of Informetrics, 2017
Publication <1 %
-
- 16 Nile River Basin, 2014.
Publication <1 %
-
- 17 wikimili.com
Internet Source <1 %
-
- 18 dergipark.org.tr
Internet Source <1 %
-
- 19 environmentlive.unep.org
Internet Source <1 %
-
- 20 Jiangyue Li, Xi Chen, Philippe De Maeyer, Tim Van de Voorde, Yaoming Li. "Ecological security warning in Central Asia: Integrating ecosystem services protection under SSPs-RCPs scenarios", Science of The Total Environment, 2024
Publication <1 %
-
- 21 Lima Lourdes, Zelaya Karina, Laterra Pedro, Massone Héctor, Maceira Néstor. "A dynamic simulation model of land cover in the Dulce Creek Basin, Argentina", Procedia Environmental Sciences, 2011
Publication <1 %
-

-
- 22 www.igi-global.com Internet Source <1 %
-
- 23 etheses.whiterose.ac.uk Internet Source <1 %
-
- 24 www.sciencepubco.com Internet Source <1 %
-
- 25 Izhar Ahmad, Muhammad Waseem, Sadaquat Hussain, Megersa Kebede Leta. "Climate change-induced spatiotemporal variations of land use land cover by using multitemporal satellite imagery analysis", *Journal of Water and Climate Change*, 2024
Publication <1 %
-
- 26 Masoud Norouzi, Marta Chàfer, Luisa F. Cabeza, Laureano Jiménez, Dieter Boer. "Circular economy in the building and construction sector: A scientific evolution analysis", *Journal of Building Engineering*, 2021
Publication <1 %
-
- 27 Vandana Tiwari Srivastava, Alok Sharma, S. S. Jadon. "A review of the formation, mitigation strategies from 50 years of global urban heat island studies", *Environment, Development and Sustainability*, 2024
Publication <1 %
-

28	Yuan Wang, Jing Li, Zhengqiu Fan, Xiangrong Wang. "Gis-Based Urban Mosaic and its Gradient Analysis: A Case Study from Wuhu City, China", 2008 2nd International Conference on Bioinformatics and Biomedical Engineering, 2008 Publication	<1 %
29	archive-ouverte.unige.ch Internet Source	<1 %
30	assets.researchsquare.com Internet Source	<1 %
31	queensu.ca Internet Source	<1 %
32	sciendo.com Internet Source	<1 %
33	spectrum.library.concordia.ca Internet Source	<1 %
34	wiredspace.wits.ac.za Internet Source	<1 %
35	www.gjesm.net Internet Source	<1 %
36	www.ijhcum.net Internet Source	<1 %
37	www.springerprofessional.de Internet Source	<1 %

38	www.telesurenglish.net Internet Source	<1 %
39	www2.kuet.ac.bd Internet Source	<1 %
40	1library.net Internet Source	<1 %
41	biblio.ugent.be Internet Source	<1 %
42	dokumen.pub Internet Source	<1 %
43	dspace.knust.edu.gh Internet Source	<1 %
44	en.wikipedia.org Internet Source	<1 %
45	era.ed.ac.uk Internet Source	<1 %
46	jne.ut.ac.ir Internet Source	<1 %
47	scholarworks.utep.edu Internet Source	<1 %
48	sci-hub.se Internet Source	<1 %
49	www.cfa-international.org Internet Source	<1 %

50

www.researchsquare.com

Internet Source

<1 %

51

"Tropical Forest Ecosystem Services in Improving Livelihoods For Local Communities", Springer Science and Business Media LLC, 2023

Publication

<1 %

52

"Urban Forestry and Arboriculture in Malaysia", Springer Science and Business Media LLC, 2022

Publication

<1 %

53

Gbenga Abayomi Afuye, Ahmed Mukalazi Kalumba, Emmanuel Tolulope Busayo, Israel Ropo Orimoloye. "A bibliometric review of vegetation response to climate change", Environmental Science and Pollution Research, 2021

Publication

<1 %

54

Pindo Tutuko, Zhenjiang Shen. "The Effect of Land Use Zonings on Housing Development: The Introduction of Cdl Approach in the Border Area of Surabaya and Sidoarjo Regency, Indonesia", Procedia - Social and Behavioral Sciences, 2016

Publication

<1 %

55

Social Responsibility Journal, Volume 10, Issue 1 (2014-03-28)

Publication

<1 %

56

"Encyclopedia of Sustainability in Higher Education", Springer Science and Business Media LLC, 2019

Publication

<1 %

57

Ali Hassan Chughtai, Habibullah Abbasi, Ismail Rakip Karas. "A review on change detection method and accuracy assessment for land use land cover", Remote Sensing Applications: Society and Environment, 2021

Publication

<1 %

58

Andrés Velastegui-Montoya, Paulo Escandón-Panchana, Gina Peña-Villacreses, Gricelda Herrera-Franco. "Land use/land cover of petroleum activities in the framework of sustainable development", Cleaner Engineering and Technology, 2023

Publication

<1 %

59

Ashique Vadakkuveetil, Aakriti Grover. "Bi-temporal characterization of terrestrial temperature in relation to urban land use land cover dynamics and policies in Kozhikode Urban Area, India", Land Use Policy, 2023

Publication

<1 %

60

Ebubechukwu Arinze Okonkwo, Godspower I. Chukwuma. "chapter 12 Sustainable Development Goals and Academic Libraries in Nigeria", IGI Global, 2022

Publication

<1 %

61

Fatiha Ait El Haj, Latifa Ouadif, Ahmed Akhssas. "Monitoring Land Use and Land Cover Change Using Remote Sensing Techniques and the Precipitation-Vegetation Indexes in Morocco", *Ecological Engineering & Environmental Technology*, 2023

Publication

<1 %

62

Moschella, Manuela, Quaglia, Lucia, Spendzharova, Aneta. "European Political Economy: Theoretical Approaches and Policy Issues", *European Political Economy: Theoretical Approaches and Policy Issues*, 2023

Publication

<1 %

63

Tapas Das, Antu Jana, Biswajit Mandal, Arindam Sutradhar. "Spatio-temporal pattern of land use and land cover and its effects on land surface temperature using remote sensing and GIS techniques: a case study of Bhubaneswar city, Eastern India (1991–2021)", *GeoJournal*, 2021

Publication

<1 %

64

Waleed M. Sweileh, Ansam F. Sawalha, Samah W. Al-Jabi, Sa'ed H. Zyoud, Naser Y. Shraim, Adham S. Abu-Taha. "A bibliometric analysis of literature on malaria vector resistance: (1996 – 2015)", *Globalization and Health*, 2016

Publication

<1 %

65

Xia Wu, An-Qi Lin, Yan Li, Hao Wu, Lu-Yu Cen, He Liu, Dan-Xia Song. "Simulating spatiotemporal land use change in middle and high latitude regions using multiscale fusion and cellular automata: The case of Northeast China", Ecological Indicators, 2021

Publication

<1 %

Exclude quotes On

Exclude matches < 6 words

Exclude bibliography On