

**Table S1.** The conserved domain and each gene's architecture presenting the location of the domain of interest in each gene.

Glyma.0 1G0105 00.1	<p>action site RX-CC_like RX-CC_like superfam NB-ARC LRR LRR superfamily</p>
Glyma.0 1G0107 00.1	<p>action site RX-CC_like RX-CC_like superfam NB-ARC PLN03210</p>
Glyma0 1g0156 0	<p>Query seq. RanGAP2 interaction site Superfamilies RX-CC_like sup NB-ARC PLN00113 PLN03210 leucine-rich repeat</p>
Glyma.0 1G0131 00.1	<p>action site RX-CC_like RX-CC_like superfam NB-ARC FPK BFN02310 specific hits superfamily</p>
Glyma.0 1G0354 00.1	<p>Query seq. RanGAP2 interaction site Specific hits Superfamilies RX-CC_like NB-ARC PLN03210 leucine-rich repeat</p>
Glyma.0 1G0658 00.1	<p>action site RX-CC_like RX-CC_like superfam NB-ARC BFN02310 specific hits superfamily</p>
Glyma.0 1G1253 00.1	<p>Query seq. RanGAP2 interaction site Superfamilies RX-CC_like NB-ARC PLN03210 leucine-rich repeat</p>
Glyma.0 1G1254 00.1	<p>action site RX-CC_like RX-CC_like superfam NB-ARC BFN02310 specific hits superfamily</p>
Glyma.0 1G1478 00.2	<p>Query seq. Specific hits Superfamilies PLN00188 PLN00188 superfamily</p>
Glyma.0 1G1710 00.1	<p>Query seq. RanGAP2 interaction site Specific hits Superfamilies RX-CC_like NB-ARC PLN03210 leucine-rich repeat</p>
Glyma.0 1G1833 00.1	<p>Query seq. action site RPW8 NB-ARC SH3 PLN03210 leucine-rich repeat</p>



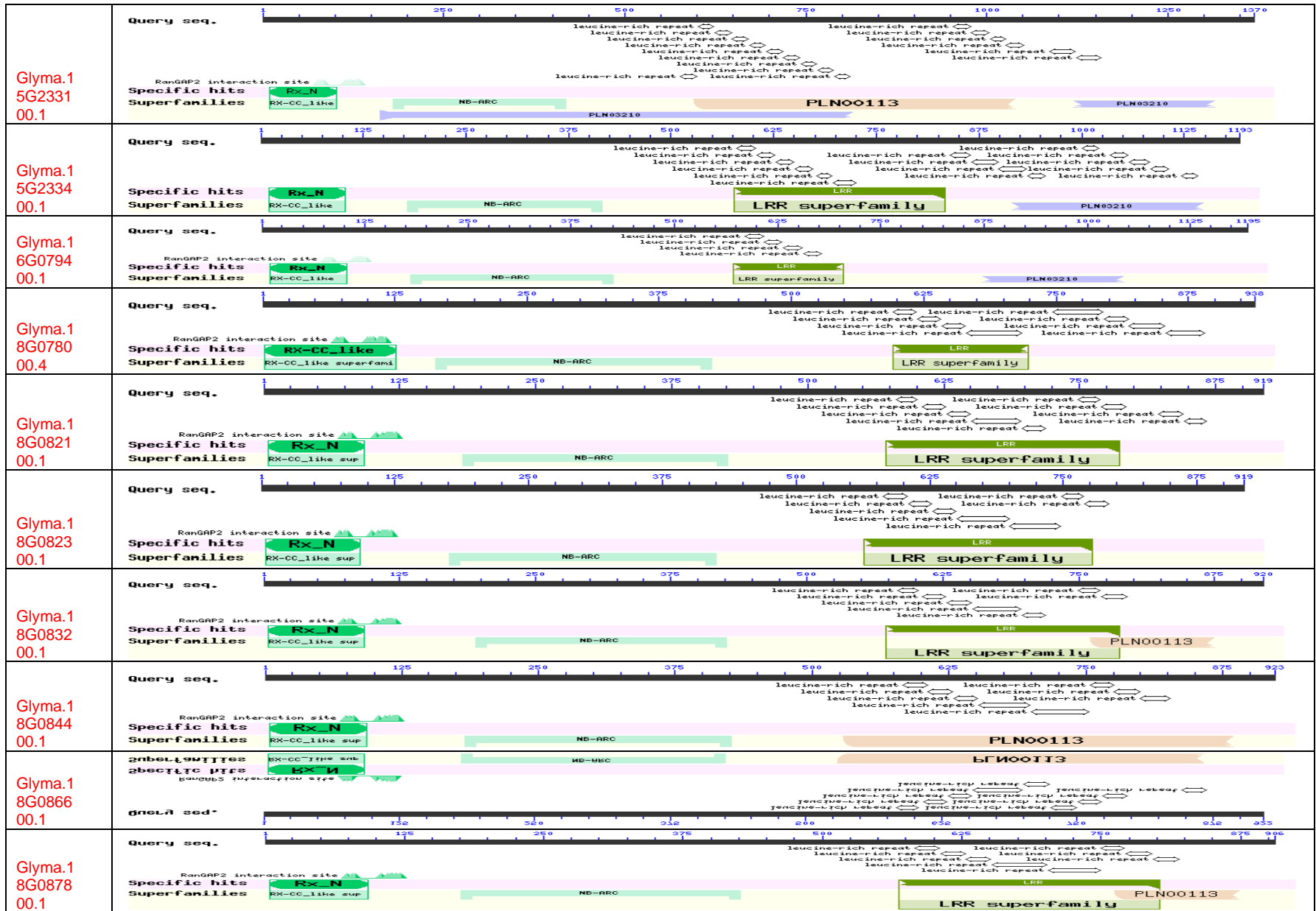
<p>Glyma.0 3G0432 00.1</p>	<p>Query seq. </p> <p>Specific hits </p> <p>Superfamilies </p> <p>leucine-rich repeat</p>
<p>Glyma.0 3G0435 00.1</p>	<p>Query seq. </p> <p>Specific hits </p> <p>Superfamilies </p> <p>leucine-rich repeat</p>
<p>Glyma.0 3G0436 00.1</p>	<p>Query seq. </p> <p>Specific hits </p> <p>Superfamilies </p> <p>leucine-rich repeat</p>
<p>Glyma.0 3G0457 00.1</p>	<p>Query seq. </p> <p>Specific hits </p> <p>Superfamilies </p> <p>leucine-rich repeat</p>
<p>Glyma.0 3G0465 00.1</p>	<p>Query seq. </p> <p>Specific hits </p> <p>Superfamilies </p> <p>leucine-rich repeat</p>
<p>Glyma.0 3G0470 00.1</p>	<p>Query seq. </p> <p>Specific hits </p> <p>Superfamilies </p> <p>leucine-rich repeat</p>
<p>Glyma.0 3G0752 00.1</p>	<p>Query seq. </p> <p>Specific hits </p> <p>Superfamilies </p> <p>leucine-rich repeat</p>
<p>Glyma.0 3G1372 00.1</p>	<p>Query seq. </p> <p>Specific hits </p> <p>Superfamilies </p> <p>leucine-rich repeat</p>
<p>Glyma.0 4G1378 00.2</p>	<p>Query seq. </p> <p>Specific hits </p> <p>Superfamilies </p> <p>leucine-rich repeat</p>

<p>Glyma.0 6G1672 00.1</p>	<p>Query seq. </p> <p>RanGAP2 interaction site </p> <p>Specific hits <b>RX_N</b></p> <p>Superfamilies <b>RX-CC_like su</b> <b>NB-ARC</b> <b>PLN03210</b></p> <p><i>leucine-rich repeat</i> <i>leucine-rich repeat</i> <i>leucine-rich repeat</i> <i>leucine-rich repeat</i> <i>leucine-rich repeat</i></p>
<p>Glyma.0 6G3112 00.1</p>	<p>Query seq. </p> <p>RanGAP2 interaction site </p> <p>Specific hits <b>RX-CC_like</b></p> <p>Superfamilies <b>RX-CC_like superfam1</b> <b>NB-ARC</b> <b>PLN00113</b></p> <p><i>leucine-rich repeat</i> <i>leucine-rich repeat</i> <i>leucine-rich repeat</i> <i>leucine-rich repeat</i> <i>leucine-rich repeat</i></p>
<p>Glyma.0 7G0757 00.1</p>	<p>Query seq. </p> <p>Superfamilies <b>NB-ARC</b></p>
<p>Glyma.0 8G2590 00.1</p>	<p>Query seq. </p> <p>RanGAP2 interaction site </p> <p>Specific hits <b>RX-CC_like</b></p> <p>Superfamilies <b>RX-CC_like superfam1</b> <b>NB-ARC</b></p> <p><i>leucine-rich repeat</i> <i>leucine-rich repeat</i> <i>leucine-rich repeat</i> <i>leucine-rich repeat</i></p>
<p>Glyma.0 8G3054 00.1</p>	<p>Query seq. </p> <p>RanGAP2 interaction site </p> <p>Specific hits <b>RX-CC_like</b></p> <p>Superfamilies <b>RX-CC_like superfam1</b> <b>NB-ARC</b> <b>LRR</b> <b>LRR super-family</b></p> <p><i>leucine-rich repeat</i> <i>leucine-rich repeat</i> <i>leucine-rich repeat</i> <i>leucine-rich repeat</i></p>
<p>Glyma.0 8G3174 00.1</p>	<p>Query seq. </p> <p>RanGAP2 interaction site </p> <p>Specific hits <b>RX_N</b></p> <p>Superfamilies <b>RX-CC_like sup</b> <b>NB-ARC</b> <b>LRR</b> <b>LRR super-family</b></p> <p><i>leucine-rich repeat</i> <i>leucine-rich repeat</i> <i>leucine-rich repeat</i> <i>leucine-rich repeat</i></p>
<p>Glyma.0 8G3177 00.1</p>	<p>Query seq. </p> <p>RanGAP2 interaction site </p> <p>Specific hits <b>RX_N</b></p> <p>Superfamilies <b>RX-CC_like sup</b> <b>NB-ARC</b> <b>PLN00113</b></p> <p><i>leucine-rich repeat</i> <i>leucine-rich repeat</i> <i>leucine-rich repeat</i> <i>leucine-rich repeat</i> <i>leucine-rich repeat</i></p>
<p>Glyma.0 8G3193 00.1</p>	<p>Query seq. </p> <p>RanGAP2 interaction site </p> <p>Specific hits <b>RX_N</b></p> <p>Superfamilies <b>RX-CC_like sup</b> <b>NB-ARC</b> <b>LRR</b> <b>LRR super-family</b></p> <p><i>leucine-rich repeat</i> <i>leucine-rich repeat</i> <i>leucine-rich repeat</i> <i>leucine-rich repeat</i></p>
<p>Glyma.0 8G3232 00.1</p>	<p>Query seq. </p> <p>RanGAP2 interaction site </p> <p>Specific hits <b>RX_N</b></p> <p>Superfamilies <b>RX-CC_like sup</b> <b>NB-ARC</b> <b>LRR</b> <b>LRR super-family</b></p> <p><i>leucine-rich repeat</i> <i>leucine-rich repeat</i> <i>leucine-rich repeat</i> <i>leucine-rich repeat</i></p>
<p>Glyma.0 8G3288 00.1</p>	<p>Query seq. </p> <p>RanGAP2 interaction site </p> <p>Specific hits <b>RX-CC_like</b></p> <p>Superfamilies <b>RX-CC_like superfam1</b> <b>NB-ARC</b> <b>LRR</b> <b>LRR super-family</b></p> <p><i>leucine-rich repeat</i> <i>leucine-rich repeat</i> <i>leucine-rich repeat</i> <i>leucine-rich repeat</i></p>



<p>Glyma.1 3G0719 00.1</p>	<p><b>Query seq.</b> </p> <p><b>Specific hits</b> </p> <p><b>Superfamilies</b> </p>
<p>Glyma.1 3G1879 00.1</p>	<p><b>Query seq.</b> </p> <p><b>Specific hits</b> </p> <p><b>Superfamilies</b> </p>
<p>Glyma.1 3G1848 00.1</p>	<p><b>Query seq.</b> </p> <p><b>Specific hits</b> </p> <p><b>Superfamilies</b> </p>
<p>Glyma.1 3G1903 00.1</p>	<p><b>Query seq.</b> </p> <p><b>Specific hits</b> </p> <p><b>Superfamilies</b> </p>
<p>Glyma.1 3G1883 00.1</p>	<p><b>Query seq.</b> </p> <p><b>Specific hits</b> </p> <p><b>Superfamilies</b> </p>
<p>Glyma.1 3G1904 00.1</p>	<p><b>Query seq.</b> </p> <p><b>Specific hits</b> </p> <p><b>Superfamilies</b> </p>
<p>Glyma.1 3G1908 00.1</p>	<p><b>Query seq.</b> </p> <p><b>Specific hits</b> </p> <p><b>Superfamilies</b> </p>
<p>Glyma.1 3G1921 00.2</p>	<p><b>Query seq.</b> </p> <p><b>Specific hits</b> </p> <p><b>Superfamilies</b> </p>
<p>Glyma.1 3G1931 00.1</p>	<p><b>Query seq.</b> </p> <p><b>Specific hits</b> </p> <p><b>Superfamilies</b> </p>
<p>Glyma.1 3G1941 00.1</p>	<p><b>Query seq.</b> </p> <p><b>Specific hits</b> </p> <p><b>Superfamilies</b> </p>

<p>Glyma.1 3G1945 00.2</p>	<p>Query seq. </p> <p>Specific hits </p> <p>Superfamilies </p>
<p>Glyma.1 3G1956 00.1</p>	<p>Query seq. </p> <p>Specific hits </p> <p>Superfamilies </p>
<p>Glyma.1 4G1994 00.1</p>	<p>Query seq. </p> <p>Specific hits </p> <p>Superfamilies </p>
<p>Glyma.1 5G1269 00.1</p>	<p>Query seq. </p> <p>Specific hits </p> <p>Superfamilies </p>
<p>Glyma.1 5G1271 00.1</p>	<p>Query seq. </p> <p>Specific hits </p> <p>Superfamilies </p>
<p>Glyma.1 5G1685 00.1</p>	<p>Query seq. </p> <p>Specific hits </p> <p>Superfamilies </p>
<p>Glyma.1 5G1868 00.1</p>	<p>Query seq. </p> <p>Specific hits </p> <p>Superfamilies </p>
<p>Glyma.1 5G2261 00.1</p>	<p>Query seq. </p> <p>Specific hits </p> <p>Superfamilies </p>
<p>Glyma.1 5G2307 00.1</p>	<p>Query seq. </p> <p>Specific hits </p> <p>Superfamilies </p>
<p>Glyma.1 5G2328 00.1</p>	<p>Query seq. </p> <p>Specific hits </p> <p>Superfamilies </p>





Glyma.1 8G0883 00.1	<p>specific hits specific superfamilies</p> <p>Query seq.</p>
Glyma.1 8G0934 00.1	<p>specific hits specific superfamilies</p> <p>Query seq.</p>
Glyma.1 8G0935 00.1	<p>Query seq.</p> <p>RanGAP2 interaction site</p> <p>Specific hits Superfamilies</p> <p>Query seq.</p>
Glyma.1 8G0936 00.1	<p>Query seq.</p> <p>RanGAP2 interaction site</p> <p>Specific hits Superfamilies</p> <p>Query seq.</p>
Glyma.1 8G0938 00.1	<p>Query seq.</p> <p>RanGAP2 interaction site</p> <p>Specific hits Superfamilies</p> <p>Query seq.</p>
Glyma.1 8G0939 00.1	<p>Query seq.</p> <p>RanGAP2 interaction site</p> <p>Specific hits Superfamilies</p> <p>Query seq.</p>
Glyma.1 8G1051 00.1	<p>Query seq.</p> <p>RanGAP2 interaction site</p> <p>Specific hits Superfamilies</p> <p>Query seq.</p>
Glyma.1 8G1089 00.1	(826)309
Glyma.1 8G1909 00.1	<p>Query seq.</p> <p>RanGAP2 interaction site</p> <p>Specific hits Superfamilies</p> <p>Query seq.</p>
Glyma.1 8G2695 00.1	<p>Query seq.</p> <p>RanGAP2 interaction site</p> <p>Specific hits Superfamilies</p> <p>Query seq.</p>
Glyma.1 8G2870 00.1	<p>Query seq.</p> <p>RanGAP2 interaction site</p> <p>Specific hits Superfamilies</p> <p>Query seq.</p>





**Table 2.** Expression data for the gene's CC\_NB\_ARC\_LRR (86 *G. max*).

Unique ID	Name	FO36 (72 hpi)	Fo40(72 hpi)	FO36 96hpi	F040(96hpi)
GlymaCCLRR1	Glyma.01G010700	1.2	3.2	-1.2	4
glymaCCLRR2	Glyma.01G013100	0	2.875	-1.155555556	1.76
GlymaCCLRR3	Glyma.01G015600	-1.078723404	-1.142857143	1.000819672	-1.145315488
GlymaCCLRR4	Glyma.01G035400	-1.103448276	-1.033333333	-1.047619048	1.061538462
GlymaCCLRR5	Glyma.01G065800	-1.373831776	-1.474226804	1.139097744	1.022900763
GlymaCCLRR6	Glyma.01G171000	-1.147679325	-1.303921569	1.061946903	-1.109452736
GlymaCCLRR7	Glyma.02G030700	-1.882352941	-1.25	-1.041666667	1.342465753
GlymaCCLRR8	Glyma.02G184300	-1.75	-1.75	-1.6	-1.1
GlymaCCLRR9	Glyma.03G034500	2	-2	-2	-2.25
GlymaCCLRR10	Glyma.03G034800	-1.253012048	-1.06185567	1.341346154	1.432692308
GlymaCCLRR11	Glyma.03G034900	-1.01572327	-1.093425606	1.169254658	1.180952381
GlymaCCLRR12	Glyma.03G037000	-1.043290043	-1.053571429	1.065957447	1.03030303
GlymaCCLRR13	Glyma.03G037100	1.181818182	-1.047619048	1.166666667	1.055555556
GlymaCCLRR14	Glyma.03G037300	-1.12173913	-1.0212	1.065420561	1.171428571
GlymaCCLRR15	Glyma.03G038800	-1.240837696	-1.022123894	1.099576271	1.142241379
GlymaCCLRR16	Glyma.03G039300	-1.053435115	-1.285714286	-1.118055556	-1.284552846
GlymaCCLRR17	Glyma.03G043000	-1.156716418	-1.8	-1.188888889	-1.071428571
GlymaCCLRR18	Glyma.03G043200	-1.666666667	-2	-2.333333333	-1.5
GlymaCCLRR19	Glyma.03G043500	-1.243243243	-1.102439024	1.013089005	1.069148936
GlymaCCLRR20	Glyma.03G043600	-1.375	-2.126760563	-1.426666667	-1.368421053
GlymaCCLRR21	Glyma.03G046500	-1.188976378	-2.128571429	-1.222222222	-1.590163934
GlymaCCLRR22	Glyma.03G047000	-1.12962963	-1.18452381	1.025162338	-1.072695035
GlymaCCLRR23	Glyma.03G075200	-1.152641879	-1.12038835	-1.141762452	-1.022727273
GlymaCCLRR24	Glyma.03G137200	-1.226044226	-1.173076923	-1.058956916	1.006535948
GlymaCCLRR25	Glyma.04G137800	-1.115384615	-1.39408867	-1.14790287	-1.007874016
GlymaCCLRR26	Glyma.07G075700	1.341463415	1.365853659	-1.606060606	1.230769231
GlymaCCLRR27	Glyma.08G259000	-1.544117647	-2.314606742	-1.727891156	-1.107142857
GlymaCCLRR28	Glyma.08G305400	-1.6	-1.818181818	1.173913043	-1.4375
GlymaCCLRR29	Glyma.08G317700	-1.114197531	-1.029239766	1.129496403	1.007317073
GlymaCCLRR30	Glyma.08G319300	-1.15704388	-1.093541203	1.068265683	1.041431262
GlymaCCLRR31	Glyma.08G323200	-1.156384505	-1.200913242	-1.031746032	-1.007173601
GlymaCCLRR32	Glyma.08G328800	-1.6	-1.538461538	-1.135802469	-1.184210526

GlymaCCLRR33	Glyma.09G020500	1.021126761	-1.299065421	-1.217391304	-1.033333333
GlymaCCLRR34	Glyma.09G020700	-1.307692308	-1.269230769	1.055555556	1.269230769
GlymaCCLRR35	Glyma.09G210400	-1.125	3.333333333	1.8	2.9
GlymaCCLRR36	Glyma.09G210600	1.023952096	-1.261538462	1.647058824	2.227722772
GlymaCCLRR37	Glyma.11G058900	-1.087557604	-1.182282794	1.097222222	-1.076923077
GlymaCCLRR38	Glyma.12G218500	1.413793103	1.931034483	0	1.333333333
GlymaCCLRR39	Glyma.13G071900	-1.280898876	-1.37295082	-1.010204082	-1.04676259
GlymaCCLRR40	Glyma.13G184800	1.18018018	1.194444444	-1.102803738	-1.258992806
GlymaCCLRR41	Glyma.13G187900	-1.23655914	-1.325490196	-1.525727069	-1.278625954
GlymaCCLRR42	Glyma.13G188300	-1.135646688	-1.117460317	1.11965812	1.014492754
GlymaCCLRR43	Glyma.13G190300	-1.133522727	-1.164179104	1.024675325	1.005291005
GlymaCCLRR44	Glyma.13G190400	-1.216393443	-1.201986755	-1.040723982	-1.107843137
GlymaCCLRR45	Glyma.13G190800	-1.175	1.065217391	-1.117117117	-1.428571429
GlymaCCLRR46	Glyma.13G192100	-1.360465116	-1.2	-1.265306122	-1.12345679
GlymaCCLRR47	Glyma.13G193100	-1.018181818	0	1.227272727	-1.058823529
GlymaCCLRR48	Glyma.13G194100	-1.284090909	-1.275862069	-1.15503876	-1.168
GlymaCCLRR49	Glyma.13G194500	1.149253731	1.107692308	1.131578947	1.571428571
GlymaCCLRR50	Glyma.13G195600	1.005405405	1.172222222	1.043147208	1.030927835
GlymaCCLRR51	Glyma.14G199400	-1.803030303	-2.20754717	-1.095238095	-1.283018868
GlymaCCLRR52	Glyma.15G126900	-1.081632653	-1.02	1.0625	1.291666667
GlymaCCLRR53	Glyma.15G127100	1.282051282	1.102564103	1.291666667	0.341559875
GlymaCCLRR54	Glyma.15G168500	-1.252918288	-1.423423423	1.084459459	-1.150793651
GlymaCCLRR55	Glyma.15G230700	-1.014492754	-1.127572016	-1.134920635	-1.124
GlymaCCLRR56	Glyma.15G232800	-1.032846715	-1.063339731	1.141025641	1.088695652
GlymaCCLRR57	Glyma.15G233100	-1.008196721	-1.034782609	1.064885496	-1.056451613
GlymaCCLRR58	Glyma.15G233400	-1.05511811	1.161538462	1.155555556	1.106060606
GlymaCCLRR59	Glyma.16G079400	-1.267605634	-1.115384615	1.6	1.068493151
GlymaCCLRR60	Glyma.18G078000	-2.159090909	-1.453125	1.085106383	-1.309859155
GlymaCCLRR61	Glyma.18G082100	-1.142857143	-1.071428571	2.25	2.125
GlymaCCLRR62	Glyma.18G082300	1.2	-1.666666667	-1.333333333	1.25
GlymaCCLRR63	Glyma.18G083200	-1.636363636	-1.52173913	1.02	1.4
GlymaCCLRR64	Glyma.18G086600	-1.081967213	1.061919505	1.189790576	1.07712766
GlymaCCLRR65	Glyma.18G087800	-2	2	1.285714286	2.142857143
GlymaCCLRR66	Glyma.18G088300	-1.5	1.1875	2.0625	1.3125

GlymaCCLRR67	Glyma.18G093500	1.428571429	-2.333333333	-3.333333333	-1.666666667
GlymaCCLRR68	Glyma.18G093600	-1.247863248	1.097902098	1.011111111	1.053030303
GlymaCCLRR69	Glyma.18G093800	1.255813953	-1.048780488	1.242857143	1.371428571
GlymaCCLRR70	Glyma.18G105100	-1.066666667	-1.409090909	-1.095238095	-1.769230769
GlymaCCLRR71	Glyma.18G190900	-1.101694915	-1.159817352	-1.034591195	-1.311740891
GlymaCCLRR72	Glyma.18G269500	-1.047008547	-1.170940171	1.049499444	1.038461538
GlymaCCLRR73	Glyma.18G287000	1.066666667	1.24137931	1.24137931	1.103448276
GlymaCCLRR74	Glyma.18G287100	-1.070707071	-1.130434783	-1.144032922	-1.172413793
GlymaCCLRR75	Glyma.19G085600	-1.428571429	-3	-1.703703704	-1.25
GlymaCCLRR76	Glyma.19G134100	-1.113636364	-1.361111111	1.11627907	-1.024390244
GlymaCCLRR77	Glyma.19G134200	-1.025641026	-1.583333333	1.055555556	1.296296296
GlymaCCLRR78	Glyma.19G135600	-1.21038961	-1.354166667	1.025735294	1.007462687
GlymaCCLRR79	Glyma.19G135800	-1.127906977	-1.283783784	-1.135416667	-1.35443038
GlymaCCLRR80	Glyma.19G136900	-1.291666667	-1.475409836	-1.398373984	-1.169014085
GlymaCCLRR81	Glyma.19G137200	-1.015873016	-1.050420168	1.016129032	-1.008333333
GlymaCCLRR82	Glyma.19G139700	-1.302816901	-1.046511628	-1.168627451	1.040540541
GlymaCCLRR83	Glyma.20G042400	-1.342857143	-1.15	-1.461538462	0
GlymaCCLRR84	Glyma.20G042700	1.294117647	1.5625	1.108695652	0
GlymaCCLRR85	Glyma.20G046200	-1.119122257	-1.417004049	-1.286738351	-1.402390438
GlymaCCLRR86	Glyma.20G193300	-1.5	-2.571428571	-1.833333333	-2
GlymaCCLRR87	Glyma.20G195400	1.171651495	1.181938911	1.17844523	1.212484994

---