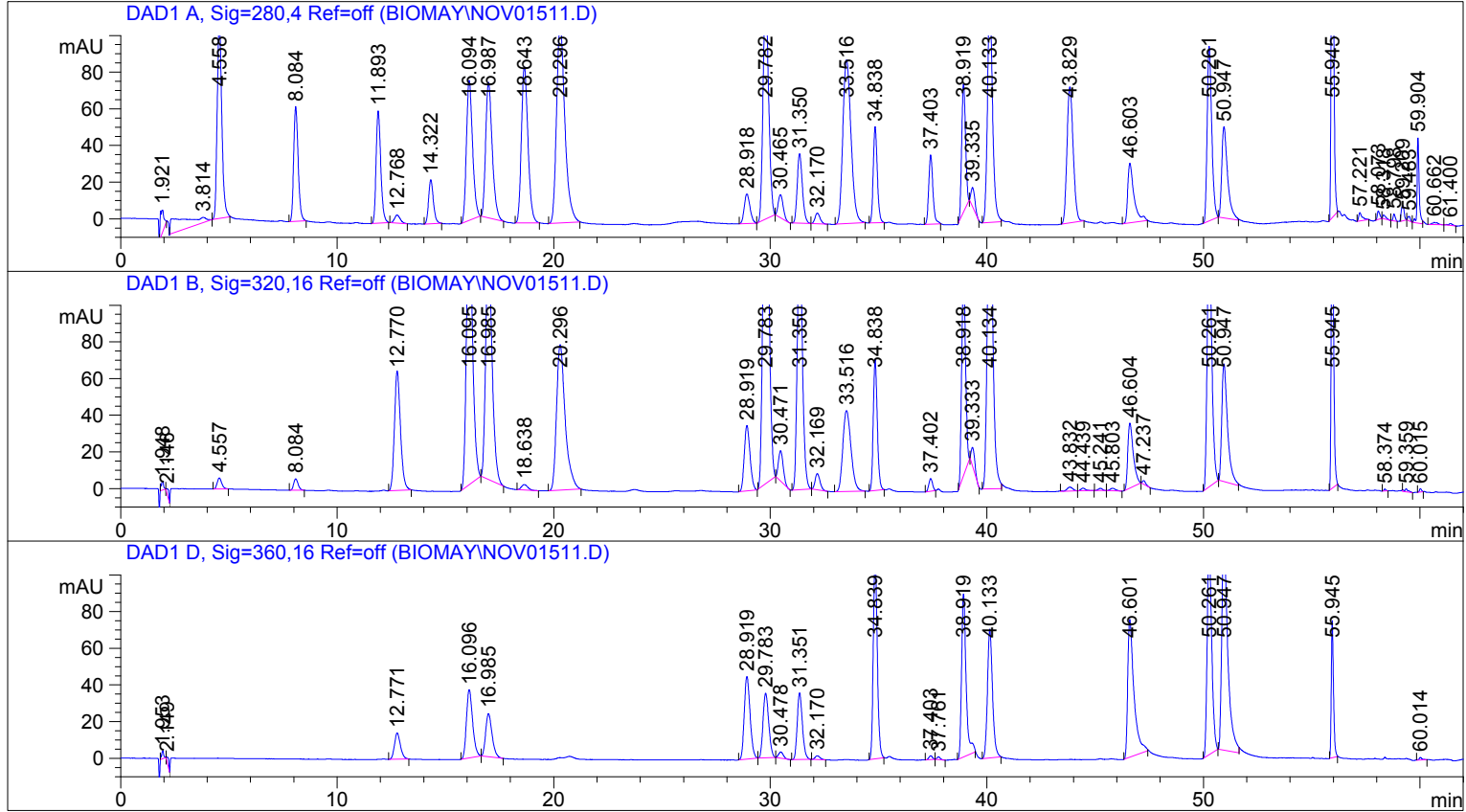


=====
 Injection Date : 1/21/2018 3:18:51 PM
 Sample Name : phenol Location : Vial 1
 Acq. Operator : A
 Acq. Instrument : Instrument 1 Inj Volume : 10 µl
 Method : C:\HPCHEM\1\METHODS\PHENOLS2.M
 Last changed : 1/21/2018 2:03:13 PM by A
 (modified after loading)



=====
 Area Percent Report
 =====

Sorted By : Signal
 Multiplier : 1.0000
 Dilution : 1.0000
 Use Multiplier & Dilution Factor with ISTDs

Signal 1: DAD1 A, Sig=280,4 Ref=off

Peak #	RetTime [min]	Type	Width [min]	Area [mAU*s]	Height [mAU]	Area %
1	1.921	PBA	0.1479	152.08481	12.87052	0.5204
2	3.814	PBA	2.0239	486.38028	2.89523	1.6643
3	4.558	VBA	0.2351	1587.44763	105.77361	5.4320
4	8.084	PBA	0.2236	898.36975	62.54979	3.0741
5	11.893	PBA	0.2306	914.67584	61.11244	3.1299
6	12.768	PBA	0.2760	79.45268	4.37243	0.2719
7	14.322	PBA	0.2396	369.68768	24.01595	1.2650
8	16.094	PB	0.3052	1498.92590	76.29395	5.1291
9	16.987	VBA	0.3258	1557.48755	73.91222	5.3295
10	18.643	PBA	0.3342	1794.45227	85.03591	6.1403
11	20.296	PBA	0.4171	2887.86963	107.60075	9.8818
12	28.918	PB	0.2959	298.14410	16.11175	1.0202
13	29.782	VB	0.2864	2186.67529	118.96460	7.4824
14	30.465	VBA	0.2487	197.38594	12.46983	0.6754
15	31.350	BB	0.2579	629.20734	37.85637	2.1530
16	32.170	VBA	0.2516	93.24075	5.79855	0.3191
17	33.516	PBA	0.4106	2345.73950	89.24912	8.0267
18	34.838	PBA	0.1984	675.86285	52.42733	2.3127
19	37.403	PBA	0.2084	505.02646	37.67398	1.7281
20	38.919	PB	0.1968	867.86609	69.92788	2.9697

Peak #	RetTime [min]	Type	Width [min]	Area [mAU*s]	Height [mAU]	Area %
21	39.335	VBA	0.2012	123.64905	10.21551	0.4231
22	40.133	PBA	0.2495	2001.91748	123.27467	6.8502
23	43.829	PBA	0.3124	1478.08203	74.19536	5.0578
24	46.603	PBA	0.2976	649.40784	32.43467	2.2222
25	50.261	PB	0.2325	1406.00977	95.07869	4.8111
26	50.947	VBA	0.2802	920.90240	49.68336	3.1512
27	55.945	PBA	0.1114	2051.30981	287.09329	7.0192
28	57.221	PBA	0.1617	50.65658	4.55532	0.1733
29	58.073	PB	0.1195	36.25612	4.62441	0.1241
30	58.318	VB	0.1394	20.58313	2.08073	0.0704
31	58.798	VBA	0.1161	25.64859	3.73803	0.0878
32	59.209	PB	0.1448	73.53345	8.18582	0.2516
33	59.483	VB	0.1357	19.40152	2.36470	0.0664
34	59.904	VBA	0.0958	302.62653	46.57327	1.0355
35	60.662	PB	0.2315	22.75208	1.25533	0.0779
36	61.400	VBA	0.1547	15.34446	1.32876	0.0525

Totals : 2.92241e4 1803.59415

Results obtained with enhanced integrator!

Signal 2: DAD1 B, Sig=320,16 Ref=off

Peak #	RetTime [min]	Type	Width [min]	Area [mAU*s]	Height [mAU]	Area %
1	1.948	PBA	0.1185	38.31426	4.73120	0.1315
2	2.146	VBA	0.1247	26.69385	2.81390	0.0916
3	4.557	PBA	0.2321	87.91611	5.95936	0.3016
4	8.084	PBA	0.2218	88.92064	6.25786	0.3051
5	12.770	PBA	0.2976	1259.73901	65.13587	4.3221
6	16.095	PB	0.3059	2921.56836	148.25227	10.0238
7	16.985	VBA	0.3219	2602.57422	125.52818	8.9293
8	18.638	PBA	0.3156	58.98756	2.92119	0.2024
9	20.296	PBA	0.4213	2212.30078	79.33486	7.5903
10	28.919	PB	0.2882	659.19702	35.57237	2.2617
11	29.783	VB	0.2949	3987.42822	216.46155	13.6807
12	30.471	VBA	0.2422	251.73817	16.48080	0.8637
13	31.350	PBA	0.2583	2361.03540	141.79173	8.1006
14	32.169	BBA	0.2479	138.69881	8.79945	0.4759
15	33.516	PBA	0.4099	1155.64160	44.06929	3.9650
16	34.838	PBA	0.1982	919.97900	71.45280	3.1564
17	37.402	PBA	0.1918	81.68323	6.81833	0.2803
18	38.918	PB	0.1948	1380.08997	109.66167	4.7350
19	39.333	VBA	0.1897	116.29581	10.15154	0.3990
20	40.134	PBA	0.2508	3339.48779	204.14812	11.4577
21	43.832	BB	0.3080	42.20953	2.16019	0.1448
22	44.439	VBA	0.2330	22.47239	1.44823	0.0771
23	45.241	PB	0.2099	15.89188	1.20489	0.0545
24	45.803	VBA	0.2593	22.98751	1.37337	0.0789
25	46.604	PB	0.2652	624.37384	35.50666	2.1422
26	47.237	VBA	0.1629	20.52744	2.01399	0.0704
27	50.261	PB	0.2288	2103.42627	142.05025	7.2168
28	50.947	VBA	0.2798	1184.84363	64.05470	4.0652
29	55.945	PBA	0.1075	1382.89783	193.15283	4.7447
30	58.374	PBA	0.0912	6.13556	1.03459	0.0211
31	59.359	BBA	0.1546	20.81394	1.77707	0.0714
32	60.015	PBA	0.0972	11.46311	1.82634	0.0393

Totals : 2.91463e4 1753.94544

Results obtained with enhanced integrator!

Signal 3: DAD1 D, Sig=360,16 Ref=off

Peak #	RetTime [min]	Type	Width [min]	Area [mAU*s]	Height [mAU]	Area %
1	1.953	PBA	0.0972	31.11496	4.26114	0.2293
2	2.149	VBA	0.1269	24.69699	2.55166	0.1820
3	12.771	PBA	0.2944	273.13483	14.33025	2.0124
4	16.096	PB	0.3073	736.86096	37.16815	5.4292

Peak #	RetTime [min]	Type	Width [min]	Area [mAU*s]	Height [mAU]	Area %
5	16.985	VBA	0.3191	480.50882	23.44240	3.5404
6	28.919	PB	0.2903	843.96277	45.10715	6.2183
7	29.783	VB	0.2852	645.33380	35.31240	4.7548
8	30.478	VBA	0.2467	51.22475	3.34334	0.3774
9	31.351	PBA	0.2625	607.30408	36.43691	4.4746
10	32.170	PBA	0.2501	33.38790	2.09331	0.2460
11	34.839	PBA	0.1989	1429.85962	110.57039	10.5351
12	37.403	PB	0.1806	23.80194	2.09376	0.1754
13	37.761	VBA	0.1647	15.09169	1.45865	0.1112
14	38.919	PBA	0.2215	1289.85974	88.79110	9.5036
15	40.133	PBA	0.2484	1134.92432	70.28778	8.3621
16	46.601	PBA	0.2928	1497.50684	75.05277	11.0335
17	50.261	PB	0.2277	1671.09509	113.57939	12.3125
18	50.947	VBA	0.2877	2237.27100	116.65870	16.4841
19	55.945	PBA	0.1074	531.92273	74.42696	3.9192
20	60.014	BBA	0.1368	13.44143	1.39064	0.0990

Totals : 1.35723e4 858.35686

Results obtained with enhanced integrator!

*** End of Report ***