



Contents lists available at ScienceDirect

Journal of King Saud University – Science

journal homepage: www.sciencedirect.com

Original article

Assessment of Inter simple sequence repeat (ISSR) and simple sequence repeat (SSR) markers to reveal genetic diversity among *Tamarix* ecotypesMusarrat Ramzan ^{a,*}, Sadia Sarwar ^b, Naheed Kauser ^c, Rabia Saba ^b, Iqtidar Hussain ^{c,g}, Anis Ali Shah ^{b,d}, Muhammad Naveed Aslam ^e, Jawaher Alkahtani ^f, Mona S. Alwahibi ^f^a Department of Botany, The Islamia University of Bahawalpur, Bahawalpur, Pakistan^b Department of Biological Sciences, University of Sargodha, Sub-Campus Bhakkar, Pakistan^c Department of Biotechnology, Jinnah University for Women Karachi, Karachi, Pakistan^d Department of Botany, University of Narowal, Narowal, Pakistan^e Department of Plant Pathology, College of Agriculture and Environmental Sciences, The Islamia University of Bahawalpur, Bahawalpur, Pakistan^f Department of Botany and Microbiology, College of Science, King Saud University, Riyadh 11451, Saudi Arabia^g Assistant Professor, Department of Agronomy, Faculty of Agriculture, Gomal University, KP., Dera Ismail Khan, Pakistan

ARTICLE INFO

Article history:

Received 6 August 2020

Revised 1 October 2020

Accepted 5 October 2020

Available online 16 October 2020

Keywords:

Thal area

Plant taxonomy

Microsatellite

Inter simple sequence repeat

Genetic diversity

ABSTRACT

Tamarix is an important genus of Tamariceae family, known for its medicinal importance. Its taxonomy is tricky, and a few molecular markers are available for species identification. The present study was designed to evaluate the genetic diversity among 21 *Tamarix* specimens collected from Thal desert, Punjab, Pakistan. Ten Inter-Simple Sequence Repeats (ISSR) and six Simple Sequence Repeats (SSR) markers were used. Results revealed that ISSR markers produced 131 bands, of which 116 were polymorphic (88.5%) with a mean Polymorphic Information Content (PIC) value of 0.34. The SSR markers yielded 30 amplified bands, of which 24 were polymorphic (80.28%) with mean PIC value of 0.35. Cluster and factorial analysis revealed a high level of genetic variability among tested *Tamarix* ecotypes. Dissimilarity index indicated a genetic variability among tested specimens ranging from 0.00 to 0.77. The ISSR analysis reflected that *Tamarix* specimens stemming from Kalurkot and Bhakkar region revealed the highest dissimilarity level with respect to the rest of the specimens.

© 2020 The Authors. Published by Elsevier B.V. on behalf of King Saud University. This is an open access article under the CC BY-NC-ND license (<http://creativecommons.org/licenses/by-nc-nd/4.0/>).

1. Introduction

Tamarix, commonly known as Tamarisk or Athel Pine is an important phreatophyte. It is a genus of small family Tamaricaceae belongs to the order Caryophyllales (Vonlanthen et al., 2010). It is globally distributed as perennial shrub, mostly in salty, dry and riparian habitats. The characteristic feature of *Tamarix* is feathery foliage and slender branches containing small scale-like leaves (Naz et al., 2013). *Tamarix* is globally known for its tremendous medicinal properties. It is used to treat toothache (Kamal et al., 2009), treatment of rheumatism, and liver diseases (Marwat et al., 2009). Leaf and flower infusion of *Tamarix* have anti-

inflammatory, stimulant, analgesic and anti-diarrheic properties (Datta et al., 2004). It is known as an interesting source of antioxidants for therapeutics, nutraceutical industries, and for food manufacturers (Riadh et al., 2009). Numerous biological activities such as antiseptic (saponins and aqnthraquinones), antitumor (mucopolysaccharides), anti-inflammatory (steroids and salicylic acid), and immune regulatory activities (glucomanans) have been reported for *Tamarix* species. The bark of *T. aphylla* is an astringent tonic, which is commonly used to treat hepatitis, eczema and skin diseases like capitis, syphilis and scaly skin (Iqbal et al., 2012).

Tamarix is a halophytic species, highly resistant to abiotic stresses, particularly salinity (Wang, 2011). It is highly adapted to extreme environmental conditions and plays a vital role in rehabilitation of degraded ecosystems and provides a great help to control desertification; Abdelhamid (Abdelhamid and Chaabane, 2014) revealed that *Tamarix* is ubiquitous and can tolerate adverse environmental conditions such as drought, salinity and cold. It is a small family of about four genera and 110 species; in Pakistan it is represented by four genera and 35 species (Kaiser, 1981).

Genetic diversity quantifies the magnitude of genetic variability within or among populations (Hughes et al., 2008). It estimates

* Corresponding author.

E-mail address: musarrat.ramzan@iub.edu.pk (M. Ramzan).

Peer review under responsibility of King Saud University.



Production and hosting by Elsevier

homogeneity or heterogeneity that allows the species to adapt and persist in changing environments (Ashraf et al., 2010). Inter simple sequence repeat (ISSR) estimates the genetic relationship/variability and DNA fingerprints with a reverse and forward synthetic nucleotide primers. This technique is successfully employed in various taxonomic and genetic diversity studies (Hamza et al., 2013). Simple sequence repeat (SSR) markers are co-dominant, abundant, highly reproducible and exhibit a high degree of allelic distinction (Podani, 1997). The SSRs appear to be ubiquitous in higher organisms, though their occurrence varies among species. They are generally copious, dispersed throughout the genome, and show higher levels of polymorphism than other genetic makers (Holton et al., 2002). Yao et al. (2008) reported that among various molecular markers, ISSRs are highly reliable because of high annealing temperature and longer sequence.

Insights into genetic diversity within and among populations of *Tamarix* ecotypes would be helpful for breeding and conservation strategies. Conservation decisions can be made quickly on the basis of genetic diversity without considering ecological data (Ashraf et al., 2010). Genetic diversity of *Tamarix* species was reported for the first time from yellow river Delta (Yao et al., 2008), and it was of high level diversity. In the year 2013, Mahmood et al. (Mahmood et al., 2013) were the first one to report the genetic diversity of *Tamarix* species in Pakistan. They analyzed 13 salt-tolerant species by Random Amplified Polymorphic DNA (RAPD) markers. Abdelhamid and Chaabane (Abdelhamid and Chaabane, 2014) studied the effect of environmental factors on *Tamarix* genus with the help of molecular markers; for this study 23 genotypes were selected from three different sites and 14 specific primers were utilized. The results showed a high level of genetic divergence within and among species.

To date limited information is available on the genetic study of *Tamarix* throughout the world. In Pakistan also majority of research reports are regarding its phytochemical, antibacterial, and anticancerous studies. There is almost no work is reported regarding molecular and genetic studies of this genus from

Pakistan. As this data will be very useful for the management of plant genetic resources, their conservation and improvement. Therefore; there is an utmost need to study the molecular and genetics variations and divergence among various species of Tamarisk present in Pakistan. Present research was designed to evaluate the genetic information as well as evolutionary relationships among *Tamarix* ecotypes in Pakistan. The samples were collected from seven different localities, distributed in arid the zone of District Bhakkar, Pakistan. The study will be helpful to understand the genetic diversity or similarity among and within populations.

Table 1
Representing 21 samples of *Tamarix* specimens obtained from different areas of District Bhakkar and date of collection of each sample.

Sr No	Sample Code	Date of collection	Location
1	S1 L	22-08-15	Kalorkot
2	S1 M	22-08-15	Kalorkot
3	S1 S	22-08-15	Kalorkot
4	S2L	20-08-15	Darya khan
5	S2 L	20-08-15	Darya khan
6	S2 S	20-08-15	Darya khan
7	S3L	20-08-15	Gujjah
8	S3 S	20-08-15	Gujjah
9	S3 S	20-08-15	Gujjah
10	S4L	22-08-15	Bhakkar
11	S4L	22-08-15	Bhakkar
12	S4S	22-08-15	Bhakkar
13	S5L	22-08-15	Mankera
14	S5M	22-08-15	Mankera
15	S5S	22-08-15	Mankera
16	S6L	23-08-15	CHAK 41-42
17	S6L	23-08-15	CHAK 41-42
18	S6S	23-08-15	CHAK 41-42
19	S7L	20-08-15	Notak
20	S7M	20-08-15	Notak
21	S7S	20-08-15	Notak

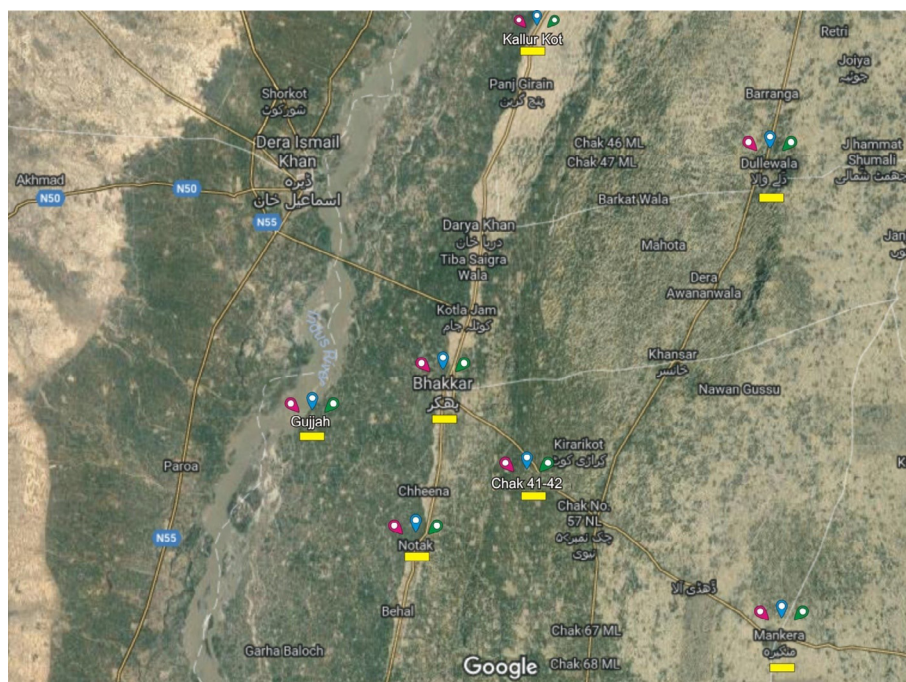


Fig. 1. Satellite map of district Bhakkar : (yellow color showed the selected areas of sampling) indicating seven sites of sampling of *Tamarix* ecotypes. 1: Mankera, 2: Notak, 3: Chak 41-42, 4: Bhakkar city, 5: Gujjah, 6: Dullewala, 7: Kallurkot.

2. Material and methods

2.1. Sample collection

Tamarix distribution in Pakistan spreads from the southern part of the Punjab province (generally known as Thal desert) to the borderline of river Indus up to Khyber Pakhtunkhwa. The District Bhakkar of Thal desert was selected for the collection of *Tamarix* ecotypes used in this study. Local bodies, gardeners, and marketers were interviewed to get the information regarding the distribution of *Tamarix* at various places. The ecotypes were selected on the basis of differences in various morphological characters, like physical appearance, branching pattern, shape, size, and stem surface. Samples were collected from their natural distributions. Plant specimens were preserved by using pressing and drying technique. The voucher specimens were deposited to the Herbarium at Department of Botany, University of Sargodha, Sub-Campus Bhakkar. A total of 21 populations were collected from the region and included in the study. Geographical location of these sites is given in the Fig. 1. Sample list is provided in Table 1.

2.2. DNA extraction and polymerase chain reaction (PCR)

To extract good quality of DNA, the leaf samples were washed with tap water and tap dried. Leaves were grinded into fine powder in mortar and pestle using liquid nitrogen. The extraction buffer (1Molar Tris-Cl, 5 M NaCl, 2% CTAB, 50 mM EDTA, 1% PVP, and 0.2% 2-mercaptoethanol) was preheated at 60 °C and then added to each sample and pour into falcon tubes, then incubated at 60 °C for 40 min, with continuous gentle shaking. Afterwards add 2 ml freshly prepared Chloroform: Isoamyl alcohol and invert mixed 50 times. Centrifuge at 10000 rpm for 10 min at 4 °C. Collect the supernatant, add 3 ml of ice cold Isopropanol and incubate at 4 °C for 30 min. Centrifuge the tubes again at 10000 rpm for 5 min to get the DNA pellet. The obtained DNA pellet is dissolved in 1000 µl of TE Buffer. The quality and quantity of DNA was estimated by GenWay 6315 UV/Visible spectrophotometer and genomic DNA were separated on 0.8% (w/v) agarose gel in 1x TBE buffer and stained with ethidium bromide.

The PCR reactions were carried out in a 25 ul volume containing 50 ng genomic DNA, 0.2 µM primer (synthesized from Penicons), 0.2 mM dNTPs, 1 unit DNA Taq polymerase, and 1x PCR buffer from Invitrogen. The reactions were set up in Eppendorf® 5331 Mastercycler® Gradient thermal cycler (Eppendorf, Hamburg Germany). The PCR program consisted of initial denaturation at 94 °C for 5 min, followed by 35 cycles of 30 sec denaturation at 94 °C, 40

sec annealing at the optimized annealing temperature for each primer and 45 sec primer extension at 72 °C. This was followed by a 5 min final extension at 72 °C. The amplified PCR products were separated on 2% (w/v) agarose gel in 1x TBE buffer employing constant voltage of 5 V/cm of the gel length and stained with ethidium bromide. The amplified products were run on horizontal gel (Electrophoresis apparatus BIO-RAD Wide Mini-Cell GT and BIO-RAD Sub-Cell GT).

2.3. Data scoring and statistical analysis

Alleles were binary coded as present (1) or absent (0) in each genotype and these data were used for calculation of the dissimilarity coefficient and cluster analysis. DARWIN software version 6.0.17 was used for the analysis of number and percentage of polymorphic loci. Cluster analysis based on unweight pair group method with arithmetic mean (UPGMA) was also done using the same software.

3. Results and discussion

3.1. Assessment of polymorphism by ISSR markers

A total 131 reproducible amplification products were generated with an average of 13.1 fragments per primer. Out of these, 116 were polymorphic ranging from 8 to 19 fragments per primer. The primers generated multiple fragments profiles varying from 10 to 21 bands (Table 2) with a mean of 11.6 alleles per locus. The highest number (19) of polymorphic bands were yielded by the primer *ubc810*, whereas least (8) were yielded by the primer *ubc811* (Table 2). The size of the amplified fragments ranged from 155 to 1729 bp. The percentage range of polymorphism varied between 66.7% and 100%. The primers had a high discriminating power as observed by their Polymorphic Information content (PIC) (mean = 0.34) values. The highest PIC value was obtained with *ubc808* (0.46) and the least (0.20) was noted for *ubc834* (Table 2). Other population genetics parameters, i.e., marker index (MI), resolving power (RP), mean resolving power (MRP), and Shannon's diversity index (H') were also recorded. Average RP and MRP were 4.3 and 0.43, respectively (maximum = 6.6 for *ubc857* and minimum = 2.3 for *ubc808*). The mean MI was 4.12 and H' was 0.334. There was a positive correlation between the MI and PIC values ($r^2 = 0.813$, $P < 0.05$) and PIC and RP ($r^2 = 0.615$, $P < 0.05$).

For this study 10 ISSR primers were selected and 21 samples were used to get amplified product of these primers. The ISSR

Table 2

Primer sequences, total number of amplified fragments for each primer, number of polymorphic bands and percentage of polymorphism and number of amplification products generated 10 ISSR primers from 21 *Tamarix* specimens.

Primer code	Primer sequence	SB	PB	PPB	BR	PIC	RP	MRP	MI	H'
<i>ubc807</i>	AGA GAG AGA GAG AGA GT	11	10	90.9	250–1051	0.45	4.9	0.49	4.5	0.266
<i>ubc857</i>	ACA CAC ACA CAC ACA CAG	15	10	66.7	168–1729	0.40	6.7	0.67	4.0	0.347
<i>ubc808</i>	AGA GAG AGA GAG AGA GC	14	12	85.7	233–1237	0.46	2.3	0.20	5.4	0.280
<i>ubc858</i>	TGT GTG TGT GTG TGT GT	16	14	87.5	155–1137	0.37	6.5	0.46	5.2	0.424
<i>ubc809</i>	AGA GAG AGA GAG AGA GG	10	8	80.0	251–1006	0.34	2.8	0.35	2.7	0.260
<i>ubc859</i>	TGT GTG TGT GTG TGT GC	10	10	100.0	344–1027	0.36	4.1	0.41	3.8	0.262
<i>ubc810</i>	GAG AGA GAG AGA GAG AT	21	19	90.5	322–1522	0.42	6.6	0.35	8.0	0.504
<i>ubc860</i>	TGT GTG TGT GTG TGT GA	13	13	100.0	135–1649	0.26	3.9	0.30	3.4	0.376
<i>ubc811</i>	GAG AGA GAG AGA GAG AC	9	8	88.9	516–1516	0.23	2.4	0.31	1.8	0.263
<i>ubc834</i>	AGA GAG AGA GAG AGA GT	12	12	100	497–1424	0.20	2.8	0.24	2.4	0.360
Total		131	116							
Mean			11.6	88.5		0.34	4.3	0.43	4.12	0.334

SB- No. of scored bands, PB- No. of polymorphic bands, PPB- percentage of polymorphic bands, BR- Band range, PIC-polymorphic information content, RP- Resolving power, MRP- Mean resolving power, MI-Marker Index, H'- Shannon's diversity index

Table 3

Primer sequences, total number of amplified fragments for each primer, number of polymorphic bands and percentage of polymorphism and number of amplification products generated with 6 SSR from 21 *Tamarix* specimens.

Primer code	Primer sequence	SB	PB	PPB	BR	PIC	RP	MRP	MI	H'
Th321FTh321R	TACCTTGCGAACACAACCTGCTACACCGAGAGAGACGCTA	3	2	66.66	121–124	0.40	6.1	3.05	8.0	0.267
Th715FTh715R	ACGTGGTTTGGTGAAAGGGCCACCTTAACCCACTCAGA	5	4	80.0	126–136	0.53	4.5	1.12	6.2	0.36
Th1071FTh1071R	CGCTCTGTGATCATCTTCGTGTCCCAATCCGTTACAAAA	3	3	100.0	147–166	0.37	6.6	2.2	5.2	0.24
TC1FTC1R	ATGTGGGGAGGTGGAGTGAATGTATGCAGACAAAAGT	3	3	100.0	115–121	0.46	5.3	1.76	1.8	0.33
TC3FTC3R	AAAGCAGGTGAGATTGAAACACCCTAATCCACATAAC	10	8	80.0	150–201	0.32	2.4	0.3	2.4	0.50
TC5FTC5R	GTCTGCCTAAGAAGTCGCCGGAATAAGGGAGAAAT	6	4	66.66	186–218	0.38	3.6	0.9	3.8	0.42
Total		30	24							
Average			4.0	80.28		0.41	4.7	1.55	4.56	0.352

SB- No. of scored bands, PB- No. of polymorphic bands, PPB- percentage of polymorphic bands, BR- Band range, PIC-polymorphic information content, RP- Resolving power, MRP- Mean resolving power, MI-Marker Index, H'- Shannon's diversity index

profiles of certain primers exhibited unique bands. The primer *ubc857* and *ubc809* generated 2 unique bands, which were not matched with any other amplified bands. Similarly, *ubc810* amplified a single unique band. The range of polymorphic bands and percentage polymorphism observed in the current study are similar to the findings of several researchers. *Bhagyawant and Shrivastava (2008)* reported that 492 bands were amplified across 12 chickpea cultivars using 7 ISSR primers. Similarly, the results of *Jhuma and Nand (Datta and Nand, 2011)* are in accordance with the present

study that a total with 162 observed bands and loci varied from 4 to 17 per primer with an average of 7.9.

3.2. Assessment of polymorphism by SSR markers

As for this assessment 06 SSR primers were selected on the basis of available published literature and successfully get amplified products. A total 30 reproducible and score able amplification products were generated with an average of 4.0 fragments per pri-

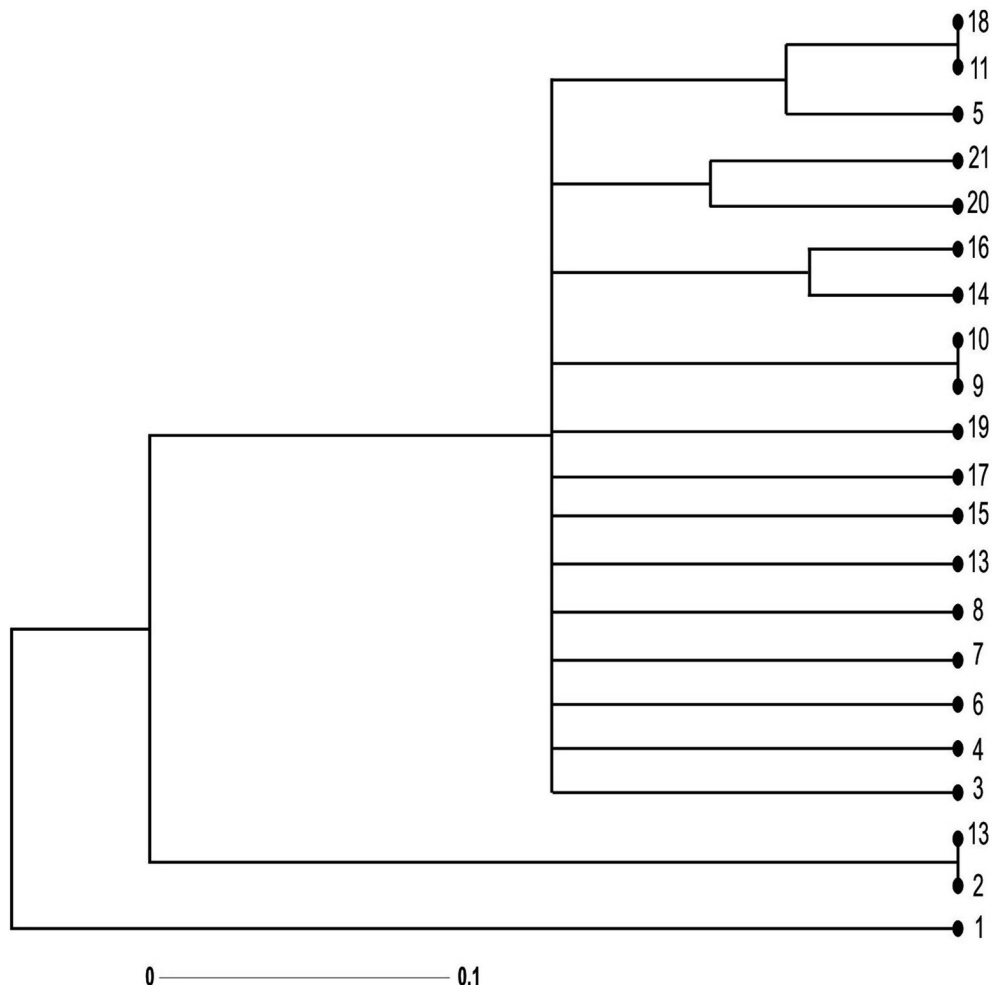


Fig. 2. Dendrogram representing the genetic relationship among 21 *Tamarix* specimens obtained from seven different regions of district Bhakkar using Darwin statistical analysis (version 6.0.17) generated from ten ISSR markers. **1,2,3:** *Tamarix* specimens of Kalurkot region, **4,5,6:** Dulleywala region, **7,8,9:** Gujjah region, **10,11,12:** Bhakkar city region, **13,14,15:** Mankera region, **16,17,18:** Chak 41–42 region and **19,20,21:** Notak region.

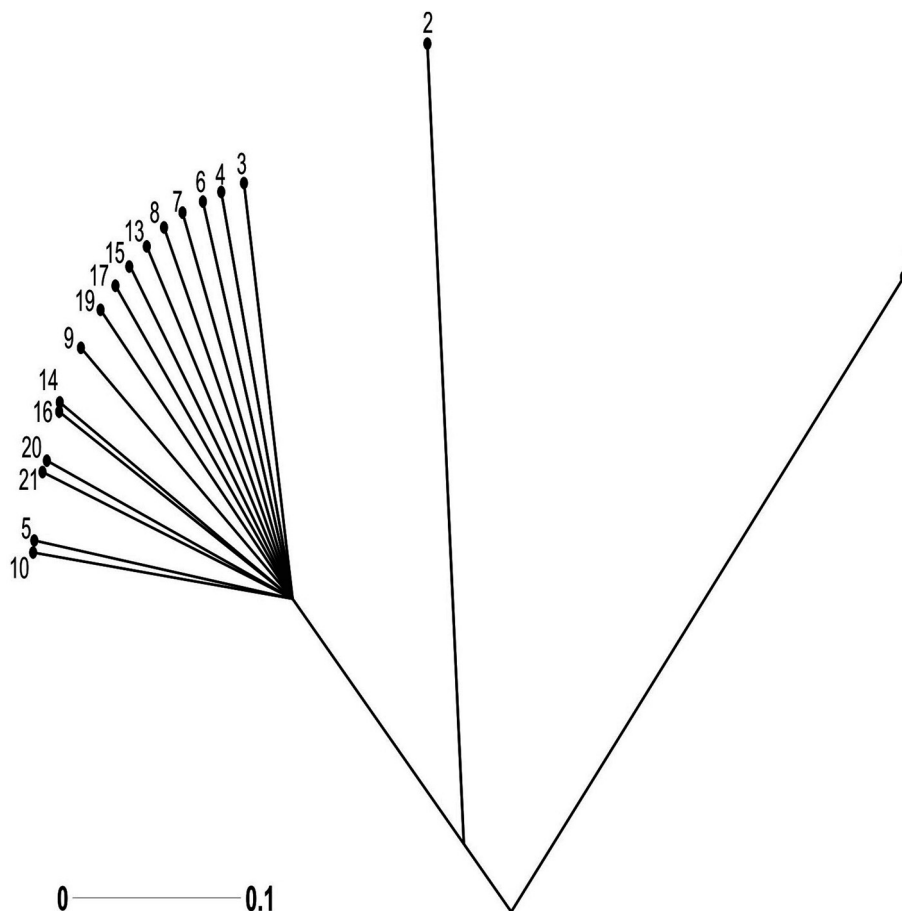


Fig. 3. Growing from root Tree indicating the genetic relationship among 21 *Tamarix* specimens obtained from seven different regions of district Bhakkar using Darwin statistical analysis (version 6.0.17) generated from 10 ISSR markers. Root = 30.1,2,3: *Tamarix* specimens of Kalurkot region, 4,5,6: Dullewala region, 7,8,9: Gujjah region, 10,11,12: Bhakkar city region, 13,14,15: Mankera region, 16,17,18: Chak 41–42 region and 19,20,21: Notak region.

mer. Of these, 24 were polymorphic ranging from 3 to 8 fragments per primer (Table 3). The maximum number of polymorphic bands (10) were yielded by primer TC3. The size of the amplified fragments ranged from 121 to 218 bp. The percentage range of polymorphism varied between 66.6% and 100%. The primers had a high discriminating power as observed by their PIC (mean = 0.41) values. The highest PIC value was obtained with Th715 (0.53) and the least (0.32) with TC3 (Table 3). The mean values of RP, MRP, MI, and H' were 4.7, 1.55, 4.56 and 0.352, respectively (Table 3). There was a positive correlation between MI and PIC values ($r^2 = 0.863$, $P < 0.05$) and PIC and RP ($r^2 = 0.74$, $P < 0.05$).

3.3. Cluster analysis (ISSR markers)

The ISSR based dendrogram showed that Kalurkot ecotype was most genetically dissimilar and physiologically distinct, which separated from all other populations with 44% genetic distance. The dendrogram separated the populations into two major groups (I and II, Fig. 2). The first group has a single Long Branch representing Kalurkot ecotype. The Long Branch length of the Kalurkot region indicates large genetic difference between Kalurkot and neighboring Bhakkar ecotype. The phylogenetic relationships of Kalurkot fit with the known historical records of *Tamarix* populations. Kalurkot is located on the bank of the river Sindh, which is a fertile area. The fertility of the region probably imparted the high level of heterogeneity in the genetic makeup of Kalurkot ecotypes.

This indicates that some gene flow has been occurred between Kalurkot region and Bhakkar populations despite the geographical and cultural barriers. Moreover, it can be explained from the fact that geographically isolated individuals tend to accumulate genetic variations during the course of environmental adaptation.

The second major group is divided into two sub-groups (IIa and IIb, Fig. 2). The main Long Branch of first sub-group contains two nodes belonging to Notak and Bhakkar regions. Although these two regions are close to each other, are highly divergent from all the remaining populations of District Bhakkar. The second sub-group is further divided into three small groups (a, b and c), which represent 11 ecotypes. These 11 ecotypes formed a single cluster with 2 ecotypes from Dullewala, 1 from Kalurkot, 3 from Gujjah, 3 from Mankera, 1 from Notak and 1 from Chak- 41/42.

The group (a) represented populations of Mankera and Chak-41/42. These localities are extremely close to each other and grouped in similar cluster. The group (b) had the populations from Notak, which indicates that both populations are quite similar to each other and belong to a single species. This can be explained by the assumption that plants or populations located in less geographical distance produce low genetic variations. However, these two populations had high level of genetic variation compared with the populations of other regions.

The sub-group (c) contained populations stemming from Dullewala region grouped in similar cluster of the populations belonging to Chak- 41/42 and Bhakkar city. Both regions are similar to each other showing there is no genetic difference between

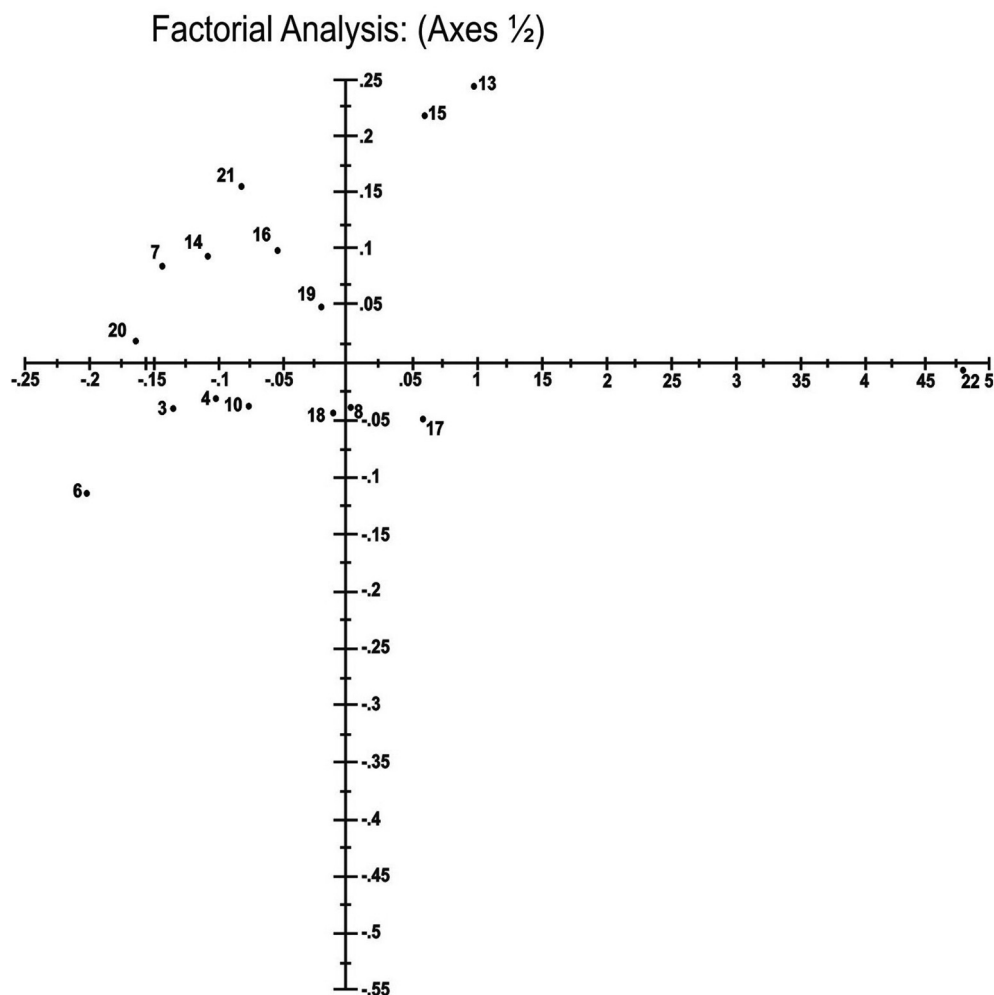


Fig. 4. Factorial analysis indicating the genetic relationship among 21 *Tamarix* specimens obtained from seven different regions of district Bhakkar using Darwin statistical analysis (version 6.0.17) generated from ten ISSR markers. **1,2,3:** *Tamarix* specimens of Kalurkot region, **4,5,6:** Dullewala region, **7,8,9:** Gujjah region, **10,11,12:** Bhakkar city region, **13,14,15:** Mankera region, **16,17,18:** Chak 41–42 region and **19,20,21:** Notak region.

the regions (Fig. 3). The plant specimen in sub group IIB, thus show close relationship in terms of origin. However, the overall results revealed a little consistency between the dendrogram based on geographical distance.

The same results were obtained through factorial analysis. *Tamarix* population of Kalurkot region was most distinct and located on the negative Y-axis at the distance of 0.53 (Fig. 4). However, the ecotype of Bhakkar city area was quite different from Kalurkot and other ecotypes as it lies on 0.49 distance at X-axis. This suggests that both these ecotypes are different from rest of the ecotypes included in the study.

Genetic diversity plays a significant role in species' origin, reproduction and adaptability. Presence of substantial genetic variation between populations has been observed in the present study. A higher degree of genetic variability is an indicator of health and provide the opportunity for adaptation to environmental changes. Meng et al. (Meng et al., 2014) observed that population variation estimates based on ISSR markers were higher than the dominant marker values. The ISSR markers have proven useful in genotype recognition and gene mapping (Abbas and Asim, 2015). Our results supported by the findings of Javaid et al. (Javaid et al., 2004), who used 10 ISSR primers. Out of these, seven primers amplified the

genomic DNA of *D. sissoo* yielding 114 fragments, of which 78 were polymorphic. Yao et al. (2008), investigated ISSR primer screening and preliminary evaluation of genetic diversity in wild populations of *Glycyrrhiza uralensis*. They reported that among various molecular markers, ISSRs were highly reliable because of high annealing temperature and longer sequence. Brito et al. (2016) determined the genetic diversity of *Varronia curassavica* Jacq. accessions using ISSR markers and found 14 polymorphic markers resulting in 149 bands with 97.98% polymorphism.

3.4. Cluster analysis (SSR markers)

The cluster tree based on SSR markers had two main clusters I and II (Fig. 5 and Fig. 6). Cluster-1 had a single long branch, while the second cluster was divided into three sub-clusters IIA, IIB and IIC.

The first cluster had a single Long Branch representing population stemming from Chak- 41/42. The branch length of the dendrogram indicates large genetic variation between Chak- 41/42 and neighboring population. It may be justified with the fact that Chak- 41/42 is an irrigated area as it has main water source. Moreover, fertilizers are applied to the soil that could have chan-

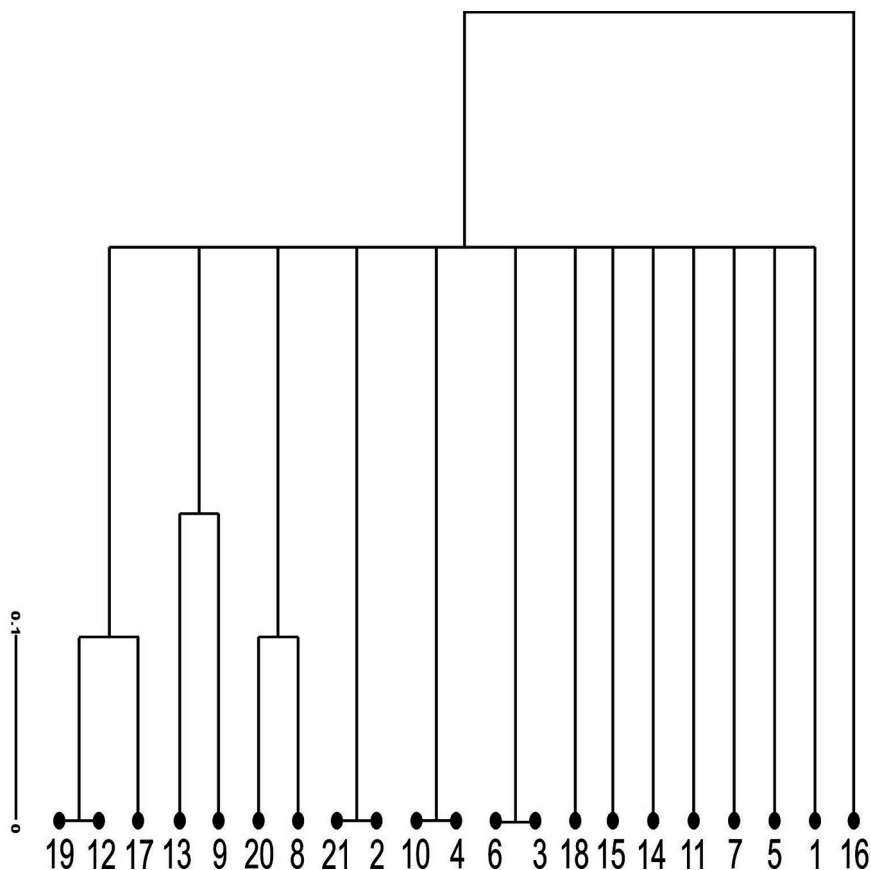


Fig. 5. Dendrogram representing the Genetic diversity among 21 *Tamarix* specimens obtained from seven different regions of district Bhakkar using Darwin statistical analysis (version 6.0.17) generated from six SSR markers. **1,2,3:** *Tamarix* specimens of Kalurkot region, **4,5,6:** Dulleywala region, **7,8,9:** Gujjah region, **10,11,12:** Bhakkar city region, **13,14,15:** Mankera region, **16,17,18:** Chak 41–42 region and **19,20,21:** Notak region.

ged the genetic makeup of Chak- 41/42 population (Hammer et al., 2006).

The second major group was split into three subgroups (IIA, IIB and IIC Fig. 5). The first subgroup contained two root nodes belonging to Notak and Bhakkar populations, which are quite similar to each other and indicated no dissimilarity. The second subgroup was further categorized into two branches belonging to Mankera and Gujjah ecotypes. These two regions are quite different with respect to the climatic conditions. Mankera lies in arid zone, while Gujjah is a small village on the west. Western side of the district Bhakkar is riverine with Indus river flow. The similarity in genetic makeup of these two populations indicate that these populations stemmed from Bhakkar. The third subclade included ecotypes from Notak and Gujjah regions. The ecotypes belonging to the same area possesses same genetic makeup due to similar environmental conditions. The results are in line with Javed (Javaid et al., 2004), who reported that *Tamarix* specimens belonging to a specific area have same genetic properties.

The present study reveals that all populations collected from Bhakkar form a single large clade. However each branch is at a specific distance from other. In short populations belonging to Notak, Chak- 41/42, Gujjah, Bhakkar city, Dulleywala and Mankera are different species (Fig. 6).

The possible explanation of low genetic diversity is low polymorphism level among tested populations. These results are simi-

lar to earlier findings (Abdelhamid and Chaabane, 2014). The genetic diversity based on Nei’s gene diversity *H*, was high in comparison to several other Tamaricaceae species (Suo et al., 2017). In our study, many populations were located on Indus River bank, and human activities are low. Similar findings have been observed by earlier studies (Liang et al., 2019). Therefore, low disturbance is believed to be the reason of low genetic diversity. Frequent gene flow by hydrochory along Pleistocene rivers resulted in the retention of considerable genetic diversity within each population and genetic homogenization among populations of *Rhododendron ripense* (mean *Fst*: 0.111, *p* < 0.001) (Kondo et al., 2009). The patterns of genetic structure are caused by several historical drainage events (Zhang et al., 2011). We found that frequent gene flow resulted in low genetic differentiation among populations within sampled populations.

Genetic dissimilarity coefficient obtained by SSR markers was 0.2–1. It showed medium resolving power of SSR markers against *Tamarix* populations. According to the low genetic dissimilarity values, tested ecotypes are closely related to each other. These findings are in contradiction with previous studies, which evaluated certain tree species by SSR markers (Vonlanthen et al., 2010).

The same results were obtained by factorial analysis. The populations arising from Dulleywala and Mankera regions are most distinct and located on the negative Y-axis at the distance of 0.45 (Fig. 7). However, population stemming from Bhakkar city area is

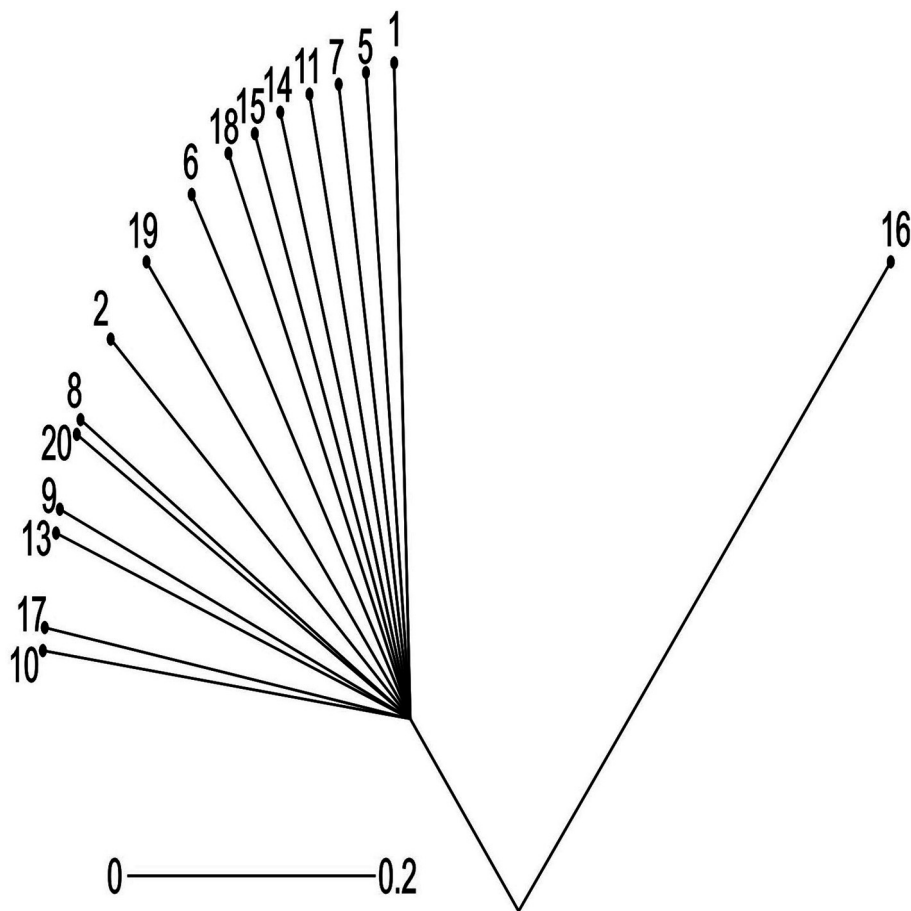


Fig. 6. Growing from root Tree indicating the genetic relationship among 21 *Tamarix* specimens obtained from seven different regions of district Bhakkar using Darwin statistical analysis(version 6.0.17) generated from six SSR markers..Root = 30. **1,2,3:** *Tamarix* specimens of Kalurkot region, **4,5,6:** Dullelywala region, **7,8,9:** Gujjah region, **10,11,12:** Bhakkar city region, **13,14,15:** Mankera region, **16,17,18:** Chak 41–42 region and **19,20,21:** Notak region.

quite different from Kalurkot population. Populations collected from other regions of district Bhakkar were present on 0.40 distance at X-axis. This suggests that both of these specimens are different varieties from all other populations.

3.5. Comparison polymorphism level in ISSR and SSR markers

Two types of marker were used for revealing genetic diversity among 21 populations. The results indicate that both ISSR and SSR markers showed phenomenon of polymorphism. Polymorphism percentage in ISSR and SSR markers was 88.50% and 80.28%, respectively. Number of polymorphic bands varied in both markers. The ISSR markers produced 116 polymorphic bands, while SSR markers resulted in 24 polymorphic bands (Tables 2 & 3 respectively).

The polymorphism in SSR markers varied from 66.66% to 100%. The primers *ubc859*, *ubc860* and *ubc834* recorded maximum (100%) polymorphic loci. Thus, all these primers proved best and were also reported by Hamza et al. (2013). The SSR primers also resulted in 66.6 to 100% polymorphism. The primers *Th1071* and *TC1* recorded maximum (100%) polymorphic loci. The comparison of both markers revealed that ISSR markers gave better results as compared to SSR markers as number of polymorphic bands indi-

cated were higher in ISSR markers. Moreover, ISSR markers take less time and are cheap (Manimekalai et al., 2002). ISSR uses microsatellite, usually 16–25 base pairs as primer in a single primer PCR reaction targeting multiple genomic loci to amplify mainly inter SSR sequences of different sizes. However, SSR markers detect the allelic variation by repeat numbers with in a locus and one pair of SSR primer deals with one locus (Weising et al., 1992).

4. Conclusion

For the above study, the comparison of the both markers revealed that ISSR markers exhibited better results than SSR markers by generating higher number of polymorphic bands. The high genetic diversity within *Tamarix* ecotypes has been preserved from a conservation point of view. We observed a subsequent bottleneck event existing in ecotypes structure, indicating that a drastic decrease in population size may impact individual populations. The low genetic differences indicates that these populations should be maintained to the greatest extent possible, in order to retain their current status, especially those with greater diversity, i.e., Kalurkot should be protected as a priority for *in situ* conservation.

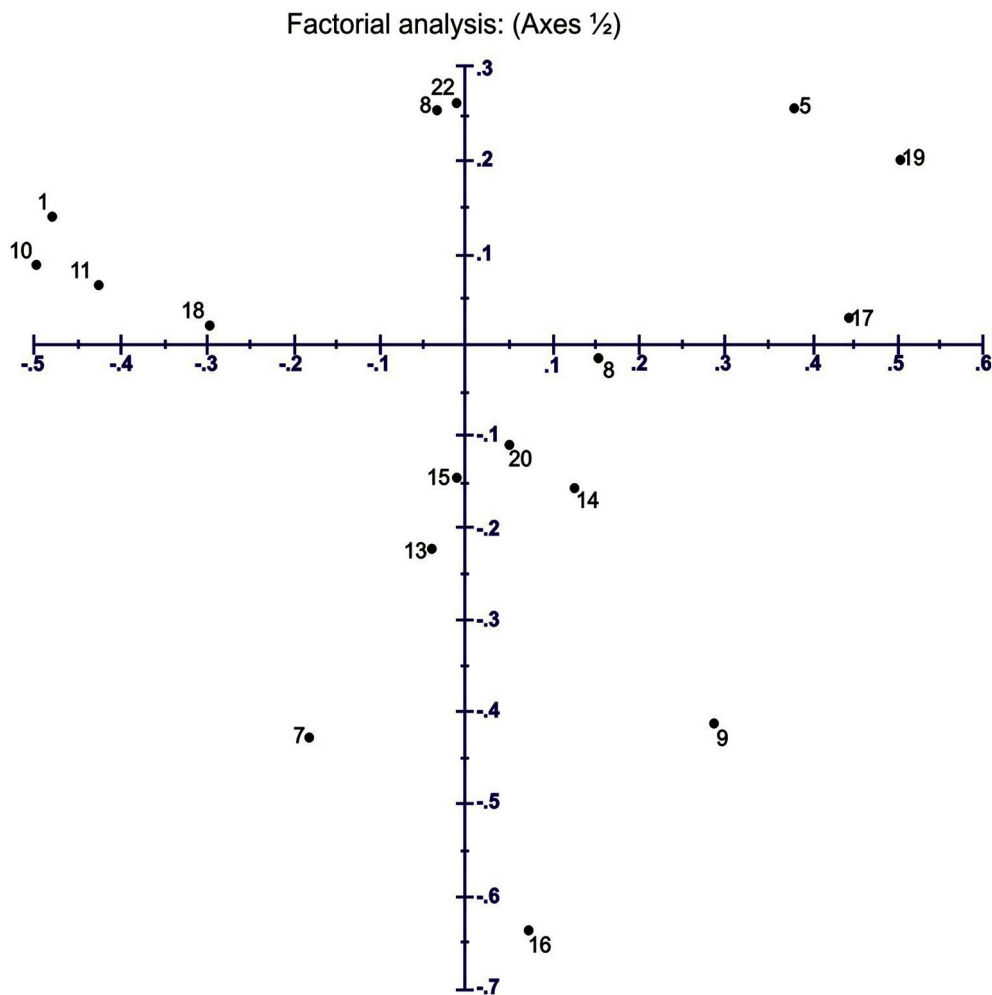


Fig. 7. Factorial analysis indicating the genetic relationships among 21 *Tamarix* specimens obtained from seven different regions of district Bhakkar using Darwin statistical analysis (version 6.0.17) generated from six SSR markers. **1,2,3:** *Tamarix* specimens of Kalurkot region, **4,5,6:** Dullewala region, **7,8,9:** Gujjah region, **10,11,12:** Bhakkar city region, **13,14,15:** Mankera region, **16,17,18:** Chak 41–42 region and **19,20,21:** Notak region.

Declaration of Competing Interest

The authors declare that they have no known competing financial interests or personal relationships that could have appeared to influence the work reported in this paper.

Acknowledgement

The authors extend their appreciation to the Researchers supporting project number (RSP-2020/193) King Saud University, Riyadh, Saudi Arabia. All authors also acknowledge the support and technical assistance provided by the Department of Biological Sciences, University of Sargodha, Pakistan.

References

- Abbas, S.R., Asim, M., 2015. Cultural globalization and its impacts on students in socio-economically backward district Bhakkar of Pakistan during 21st century. *J. Siberian Federal Univ. Humanities Soc. Sci.* 11, 2152–2161.
- Abdelhamid, K., Chaabane, R., 2014. Determination of the effect of the environment on the genetic polymorphism in the genus of *tamarix* using the molecular marker simple sequence repeats "pcr-ssr" in arid areas of the khenchela region (eastern of Algeria). *Int. J. Sci. Basic Appl. Res.* 16 (2), 1–10.
- Ashraf M, Akram N A, Arteca R N, Foolad M R.(2010). The physiological, biochemical and molecular roles of brassinosteroids and salicylic acid in plant processes and salt tolerance. *Crit. Rev. Plant Sci.* 29:162-190.
- Bhagyawant, S.S., Shrivastava, N., 2008. Genetic Fingerprinting of chickpea (*Cicer arietinum* L) germplasm using ISSR markers and their relationships. *Afr. J. Biotechnol.* 7 (24), 4428–4431.
- Brito1, F. A., Nizio1, D. A. C., Silva, A. V. C., Diniz, L. E. C., Rabbani, A. R. C., Arrigoni-Blank, M. F., Alvares-Carvalho, S. V., Figueira, G. M., Montanari, I. and Blank, A. F. (2016). *Genet. Mol. Res.* 15 (3): 678-684.
- Datta, B.K., Datta, S.K., Chowdhry, M.M., Khan, T.H., Kundu, J.K., Rashid, M.A., Nahar, L., Sarkar, S.D., 2004. Analgesic, antiinflammatory and CNS depressant activities of 1 g 2.sesquiterpenes and a flavonoide glycoside from *polygonum viscosum*. *Pharmazie* 59 (3), 222–225.
- Datta, Jhuma, Nand, L., 2011. Characterization of genetic diversity in *Cicer arietinum* L. and *Cajanus cajan* L. Millspaugh using random amplified Polymorphic DNA and Simple sequence repeat markers. *Genom. Quantit. Genet.* 3, 30–41.
- Hammer, G., Cooper, M., Tardieu, F., Welch, S., Walsh, B., Chapman, S., Podlich, D., 2006. Models for navigating biological complexity in breeding improved crop plants. *Science. Direct.* 11 (12), 587–593.
- Hamza, H., Abederrahim, M.A., Elbekkay, M., Ferchichi, A., 2013. Comparison of the effectiveness of ISSR and SSR markers in determination of date palm (*Phoenix dactylifera* L.) agronomic trait (2013). *Am. J. Crop Sci.* 7 (6), 763–769.
- Holton, A.T., Cristopher, J.T., McClure, L., Harker, N., Henry, R., 2002. Identification and mapping of polymorphic SSR markers from expressed gene sequences of barley and wheat. *Mol. Breed.* 9 (2), 63–71.
- Hughes, A.R., Inouye, B.D., Jhonson, M.T., Underwood, N., Vellend, M., 2008. *Ecol. Consequ. Genet. Divers.* 11 (6), 1461–10248.
- Iqbal, H., Khattak, B., Ayaz, S., Rehman, A., Ishfaq, M., Abbas, M.N., Rehman, H., Waheed, S., Wahab, A., 2012. Comparative Efficacy of *Aloe vera* and *Tamarix aphylla* against Cutaneous Leishmaniasis. *Int. J. Basic Med. Sci. Pharmacy* 2 (2), 2049–4963.
- Javid, A., Ghafoor, A., Anwar, R., 2004. Seed storage protein electrophoresis in groundnut for evaluating genetic diversity. *Pak. J. Bot.* 36 (1), 25–29.
- Kamal, M., Wazir, S.M., Hassan, M., Khan, S.U., Subhan, M., Muhammad, A., Taj, S., 2009. Ethnobotanically important plants of District Bannu, Pakistan. *Pakistan J. Plant Sci.* 15 (2), 87–93.

- Kondo, Toshiaki, Nakagoshi, Nobukazu, Isagi, Yuji, 2009. Shaping of genetic structure along Pleistocene and modern river systems in the hydrochorous riparian azalea, *Rhododendron ripense* (Ericaceae). *Am. J. Bot.* 96 (8), 1532–1543.
- Liang, Hongyan, Liu, Canran, Li, Yong, Wang, Yingchun, Kong, Yuhua, Quan, Jine, Yang, Xitian, 2019. Low population genetic differentiation in two *Tamarix* species (*Tamarix austromongolica* and *Tamarix chinensis*) along the Yellow River. *Genetica* 147 (1), 13–22.
- Mahmood, T., Aslam, R., Rehman, S., Naqvi, S.M., 2013. Molecular markers assisted genetic characterization of different salt tolerant plant species. *J. Anim. Plant Sci.* 23 (5), 1441–1447.
- Manimekalai, R., Nagarajan, P., Kumaran, P.M., 2002. Genetic diversity within an isolated olive (*Olea europaea* L.) population in relation to feral spread. *Sci. Hortic.* 94, 91–105.
- Marwat, S.K., Khan, M.A., Rehman, M.A., Zafar, M., 2009. Three woody plant species mentioned in Holy Quran and Ahadith and their ethnobotanical uses in North Westernpart (D.I. Khan) of Pakistan. *Pakistan J. Nutrit.* 8, 542–547.
- Meng, F., Peng, M., Wang, R., Wang, C., Guan, F., 2014. Analysis of genetic diversity in *Aconitum kongboense* L. revealed by AFLP markers. *Biochem. Syst. Ecol.* 57388394.
- Naz, F., Qamarunnisa, S., Shinwari, Z.K., Azhar, A., Ali, S.I., 2013. Phytochemical investigations of *Tamarix indica* Willd and *Tamarix passernioides* del. leaves from Pakistan. *Pak. J. Bot.* 45 (5), 1503–1507.
- Podani, J., 1997. Bevezetés a többváltozós biológiai adatfeldtárás rejtelmeibe. Introduction in the Multivariate Biological Data Analysis. Scientia Publishing, Budapest, Hungary.
- Qaiser, M., 1981. The genus *Tamarix* L. (Tamaricaceae) in Pakistan. *Pak. J. Bot.* 13 (2), 107–158.
- Riadh K, Hanen F, Wided M, Najla T, Baya H, Kamel C, Amina B, Christian M and chedly A.(2009). Antioxidant and microbial activities of the edible medicinal halophyte *Tamarix galica* L. and related polyphenolic constituents. *Int J. Pharmacol.* 17(8): 2083-2091.
- Suo, Z., Richardson, B.A., Zhuo, L., Jiang, X.L., Li, W.J., Kang, X.S., 2017. Genetic diversity and structure of an endangered desert shrub and the implications for conservation. *Aob Plants* 9 (3), 1–10.
- Vonlanthen, B., Zhang, X., Bruelheide, H., 2010. Clonal structure and genetic diversity of three desert phreatophytes. *Am. J. Bot.* 97 (2), 234–242.
- Wang, X.M., 2011. Inter-simple sequence repeats (ISSR) molecular fingerprinting markers for authenticating the genuine species of rhubarb. *J. Med Plants Res.* 5 (5), 758–764.
- Weising, K., Keimner, D., Weigand, F., Epplen, J., Kahl, G., 1992. Oligonucleotide fingerprinting reveals various probe dependent levels of informativeness in chickpea. *Genome* 35, 436–442.
- Yao, H., Zhao, Y., Chen, D.F., Chen, J.K., Zhou, T.S., 2008. ISSR primer screening and preliminary evaluation of genetic diversity in wild populations of *Glycyrrhiza uralensis*. *Biology Plantarum.* 52 (1), 117–120.
- Zhang, Ti-Cao, Comes, Hans Peter, Sun, Hang, 2011. Chloroplast phylogeography of *Terminalia franchetii* (Combretaceae) from the eastern Sino-Himalayan region and its correlation with historical river capture events. *Mol. Phylogenet. Evol.* 60 (1), 1–12.